

LESSON I:

Musical Sounds; The Staff; High and Low Pitches; The Clefs; Pitches on the Staff; Ledger Lines

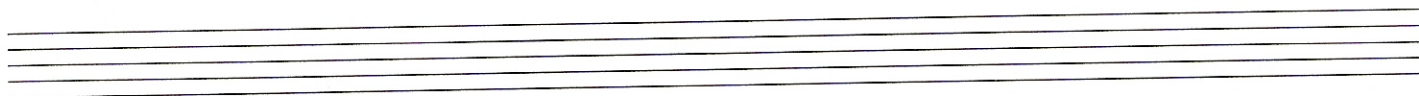
Musical Sounds consist of:

Pitch	How high is the sound? How low is it?
Duration	How long does the sound last?
Intensity	How loud or soft is the sound?
Timbre	(pronounced 'tám-brr') What is the sound quality? Does it sound like a violin? A piano? Guitar?

The Staff (and our first look at notes on the staff):

To write music down (notate it), composers use a "staff" (more than one staff are "staves"). The staff consists of five (5) parallel lines with four (4) spaces between the lines.

EXAMPLE 1 - the staff



The bottom line is Line 1, the next line up is Line 2, and so on. The lowest space is Space 1, the next higher space is Space 2, etc. Rounded shapes called "notes" are placed on the lines and in the spaces. (We will get to other note shapes and their names/meanings later.)

High and Low Pitches:

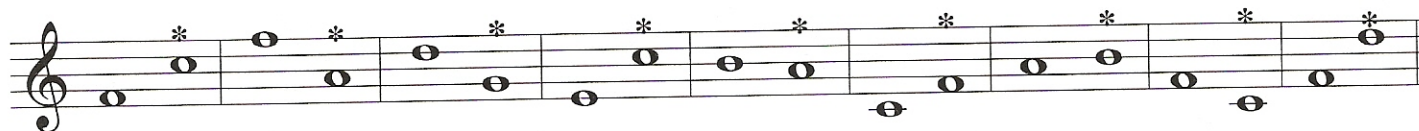
The position of notes on the staff indicates a higher or lower pitch.

EXAMPLE 2 - The first note is higher on the staff than the second note. When you hear it it sounds higher in pitch.



This note . . . is higher than . . . this note.

1. On the line under the staff, indicate whether the second note* of each group of two notes is higher (H) or lower (L) than the first.



Ex: H