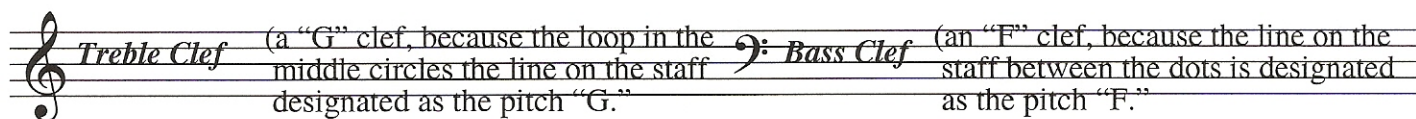


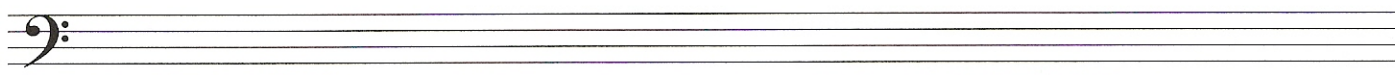
The Clefs:

In order to know where the notes go on the staff there are “clefs.” The clef is put at the left side at the beginning of the staff.

EXAMPLE 3 - There are several different clefs, but for common usage we will use only two:

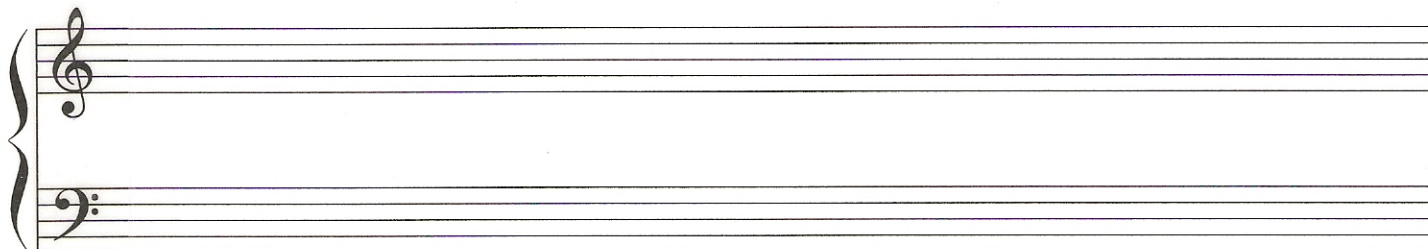


2. Practice drawing the Treble Clef several times until you can do it easily in one stroke.



3. Practice drawing the Bass Clef.

EXAMPLE 4 - The Treble Staff and the Bass Staff can be joined by a bracket at the left. The two joined staves are now referred to as the “Grand Staff.”



Pitches on the staves:

The lines and spaces of the staves are named for the musical pitches using the letters A B C D E F and G.

EXAMPLE 5 -

