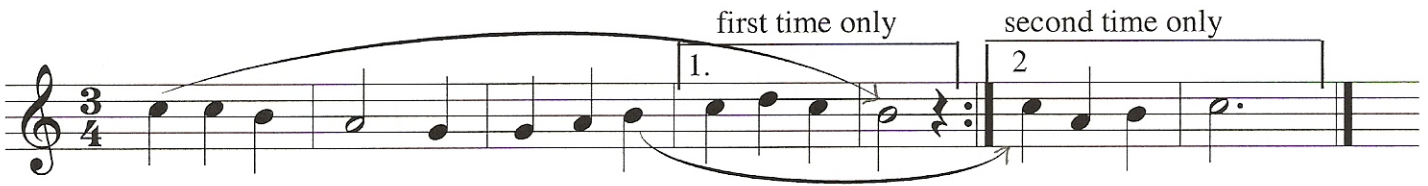


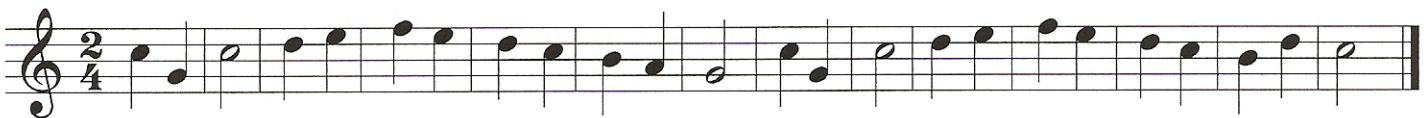
**EXAMPLE 48** - Written out the tune would look like this. As you can see it takes up about twice as much space than when the repeat signs are used.



**EXAMPLE 49** - Along with repeat signs go first and second endings. After starting back at the beginning, you skip the first ending and go straight to the second ending.



**EXAMPLE 50** - Look closely at the following to see where the tune is the same later on as it is in the beginning. Notice where it changes. The first 5 measures are identical to measures 8 to 12. Measures 6-7 and 13-14 are then the first and second endings.



42. Now re-write the tune with first and second endings. Include the repeat sign.

