

12. Four eighth notes equal one _____.
13. Two sixteenth notes equal one _____.
14. Two thirty-second notes equal one _____.
15. One quarter note equals two _____ notes or four _____ notes.

Note Stems:

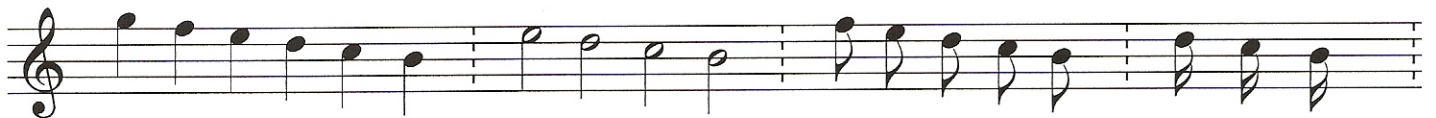
Most of the notes we have just seen have stems.

The stems go **DOWN** when the notes are above the middle line of the staff.

The stems go **UP** when the notes are lower than the middle line of the staff.

The note on the middle line may have a stem which goes either direction, depending on the other notes surrounding it.

EXAMPLE 16 -



Stems going down are on the left side of the note head.

EXAMPLE 17 -



Stems going up are on the right side of the note head.

16. Name the whole notes.



17. Name the half notes.

