







Leadership Superior/Douglas County  
2011-12 Participant List

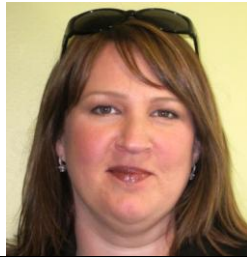
	<p><b>Jason Abrahamzon</b> Genesis</p>
	<p><b>Colleen Anderson</b> Cathedral of Christ the King</p>
	<p><b>Aaron Anderson</b> Superior Water, Light &amp; Power</p>
	<p><b>Dawn Bright</b> Essentia Health St. Mary's Hospital</p>
	<p><b>Cheri Boreen</b> UWS - Admissions</p>
	<p><b>Chris Bronson</b> City of Superior - Auditor</p>



**David Buhr**  
Superior Water, Light, & Power



**Cindy Ellefson**  
Douglas County Social Services



**Kathryn Gunderson**  
M & I Bank



**Mary Holschuh**  
Douglas County ADRC

**Michelle Hostetler**  
Development Association



**Dustin Johnson**  
UWS – Facilities Management

	<p><b>Leslie Larsen</b> WITC</p>
	<p><b>Denise McDonald</b> City of Superior &amp; Public Museums</p>
	<p><b>Keith Miller</b> Graymont</p>
	<p><b>Kimberlee Mitchell</b> Barkers Island Inn</p>
	<p><b>Andrew Nelson</b> Superior Fusion</p>
	<p><b>Adam Poskozim</b> City of Superior</p>

	<p><b>Ryan Smith</b> Saratoga Liquor Company</p>
	<p><b>Aaron Sotak</b> Morgan Stanly Smith</p>
	<p><b>Jennifer Stank</b> Douglas County</p>
	<p><b>Dave Strum</b> National Bank of Commerce</p>
	<p><b>Henk Vandenbrink</b> Challenge Center</p>
	<p><b>Rob Waksdahl</b> UWS – Business Office</p>

