







**Leadership Superior/Douglas County
2011-12 Participant List**

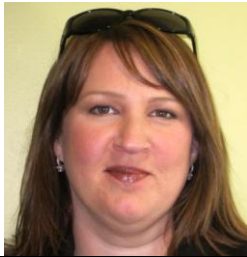
	<p>Jason Abrahamzon Genesis</p>
	<p>Colleen Anderson Cathedral of Christ the King</p>
	<p>Aaron Anderson Superior Water, Light & Power</p>
	<p>Dawn Bright Essentia Health St. Mary's Hospital</p>
	<p>Cheri Boreen UWS - Admissions</p>
	<p>Chris Bronson City of Superior - Auditor</p>



David Buhr
Superior Water, Light, & Power



Cindy Ellefson
Douglas County Social Services



Kathryn Gunderson
M & I Bank



Mary Holschuh
Douglas County ADRC



Michelle Hostetler
Development Association



Dustin Johnson
UWS – Facilities Management



Leslie Larsen
WITC



Denise McDonald
City of Superior & Public
Museums



Keith Miller
Graymont



Kimberlee Mitchell
Barkers Island Inn



Andrew Nelson
Superior Fusion

	<p>Adam Poskozim City of Superior</p>
	<p>Ryan Smith Saratoga Liquor Company</p>
	<p>Aaron Sotak Morgan Stanly Smith</p>
	<p>Jennifer Stank Douglas County</p>
	<p>Dave Strum National Bank of Commerce</p>
	<p>Henk Vandenbrink Challenge Center</p>



Rob Waksdahl
UWS – Business Office



Ryan Yingling
Screen Graphics Uniform
Connection