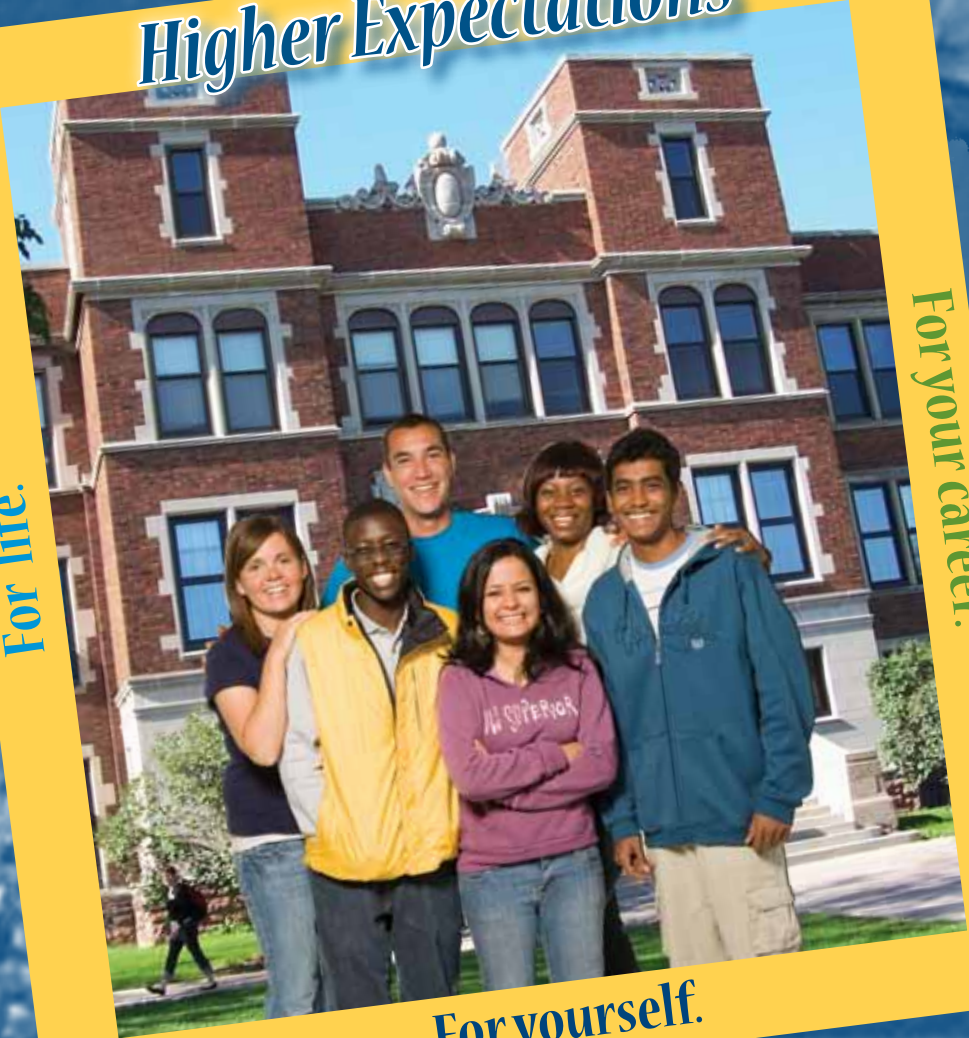


UNIVERSITY of WISCONSIN  
*Superior*

*Higher Expectations*

*For life.*

*For your career.*



*For yourself.*

**Welcome International Students!**



# What do you expect?

**Higher Expectations** Choosing a university is all about setting higher expectations for yourself, your education, and your future. At the University of Wisconsin-Superior, we'll expect more of you — and you can expect more of us.

## Expect a quality education.

The UW-Superior learning environment teaches you to analyze, to question, to solve complex problems and to adapt to a changing world.

## Expect top-rate professional training.

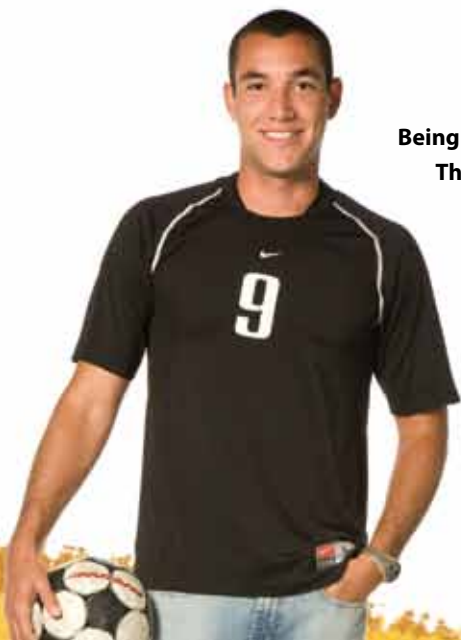
International graduates have a strong track record in graduate and MBA programs and in careers in the U.S. and overseas.

**Being a student at UW-Superior was an outstanding experience.**

**The relationship with professors, advisors, and faculty was exceptional. From my classmates to the chancellor, everyone at UWS was helpful, respectful, and friendly. I made friends for life and professional colleagues which I still keep in touch with. I learned the skills necessary to do my job from a well respected Transportation and Logistics department. Choosing to attend UWS was one of the best decisions I have made. I would strongly recommend UW-Superior.**

*Gubio Henrique, Florianopolis, Brazil (Graduated 2009)*

*Current Employment: Supply Chain Manager in  
Madison, Wisconsin, USA*





## Expect to be supported.

UW-Superior's Office of International Programs offers services to over 160 students from 30 countries. OIP staff are dedicated to helping international students have an excellent living and educational experience at UW-Superior.



## Expect to do more than sit in your room and study.

At UW-Superior, you'll find many

opportunities for active learning. You might assist a professor with research, design your own project, or work as an intern at a local business. Many international students work for one year in the United States in a job related to their major after they graduate.



## Expect a great location.

Our campus offers life in a residential neighborhood just minutes from magnificent Lake Superior. Our metro area offers plenty of conveniences, shopping, entertainment, and opportunities for internships and post-graduation employment.

## Expect personal attention.

UW-Superior's average class size is twenty-one! This means your professors can take the time to get to know you and offer extra help, which is great when you are trying to figure out a difficult math problem, writing a paper, or trying not to have that chemistry experiment explode on you! **Also, there are no graduate students teaching UW-Superior classes. This means you will only be taught by professors who are experts in their fields.**



## Expect the latest and greatest in technology and facilities.

UW-Superior has a long history - we've been around since 1893. But we're not living in the past! Students are taking advantage of the newly remodeled library to study and conduct research. Plus, there's a new student center - the Yellowjacket Union. The roof on the Union is "green" - grass, plants and water running off to a rain garden. In 2011, we'll open the new, state-of-the-art academic building, Swenson Hall!

**"I have definitely been exposed to a lot of new things and have grown over the years that I have been here.**

**There are a lot of opportunities to learn and the faculty are welcoming and ready to help you at all times."**

*Anuradha Khanal, Kathmandu, Nepal*

*Major: Social Work*

*Activities: Student Ambassador,  
Student Government, World Student Association,  
Academic Resource Coordinator*



# Expect an incredible education with solid professional training.

**UW-Superior's classes are taught in the liberal arts tradition. This means you will learn to think critically, write effectively and contribute to our changing world. Plus, you'll receive solid professional training for your profession.**

**These are the undergraduate majors and minors offered at UW-Superior.** Below many of the majors, you'll find a list of individual areas you can study in depth. These may be labeled a concentration or focus.

Accounting

Anthropology minor

Art

Art Education concentration

Art History concentration

Art Therapy concentration

Studio Art concentration

Photography minor

Biology

Cell/Molecular Biology focus

Ecology, Aquatic Biology, and Fishery Science focus

Plant Sciences focus

Business Administration

Finance concentration

International Business concentration

Management concentration

Marketing concentration

Chemistry

Forensic Chemistry concentration

Chinese minor

Communicating Arts

Mass Communication (Radio, Television, Journalism) concentration

Speech Communication concentration

Journalism minor

Professional and Personal Communication minor

Computer Science

Economics

Elementary Education (major in Teacher

Education and select a minor from the list below.)

Adaptive Education/Special Education

Early Childhood

Reading/Language Arts

Science

Social Studies

English

First Nations Studies minor

Geographic Information Systems minor

Geography minor

German minor

Global Studies minor

History

Information Technology minor

Legal Studies

Criminal Justice concentration

Library Science minor

Mathematics

Discrete Applied Mathematics concentration

Music

Performance concentration

Music Education

Choral/General Music concentration

Instrumental concentration

Philosophy minor

Physical Education

Community Health Promotion concentration

Exercise Science concentration

Wellness/Fitness Management concentration

Coaching minor

Health minor

Health and Human Performance minor

Sport Management minor

Physical Environmental Science minor

Physics minor

Political Science

International Peace Studies concentration

Psychology

Secondary and K-12 Teacher Certification

Social Work

Sociology

Spanish minor

Theatre - Bachelor of Fine Arts

Transportation and Logistics Management

Women's and Gender Studies minor

## Pre-Professional Programs

(Prepare students to apply to graduate programs in these fields.)

Chiropractic Medicine

Dentistry

Forestry

Law

Medicine

Mortuary Science

Optometry

Pharmacy

Veterinary Medicine

## Undecided?

Your academic advisor and the Career Services office will help you explore various majors and career fields.

## Design your own major

Our individually designed major and individually designed minor enable you to work with an academic advisor to design your own specialized study program.

# And after college...there's always grad school.

Once you complete your bachelor's degree, you can enroll at UW-Superior for advanced study. Our Graduate Studies program offers master of arts degrees in Visual Arts and Communicating Arts; master of science in education degree in Guidance Counseling; and in Education in the areas of Reading, Instruction, Library Science, and Special Education. We also offer a master of science in education degree and a specialist degree in Educational Administration.

For more information, contact our Graduate Studies Office at [gradstudy@uwsuper.edu](mailto:gradstudy@uwsuper.edu) or 715-394-8295.

You also can find more information at

[www.uwsuper.edu/graduate](http://www.uwsuper.edu/graduate).



UW-Superior is part of the University of Wisconsin System, one of the country's most respected university systems. Students benefit from our standards of quality, reasonable tuition and easy access to other UW System libraries and programs.



UW-Superior is a member of the highly selective Council of Public Liberal Arts Colleges. Member institutions provide access to an outstanding liberal arts education to students of high ability and from all backgrounds.



UW-Superior is one of the "Colleges of Distinction," a nationwide group of colleges and universities that offer students outstanding opportunities to learn, grow and succeed.



## Get involved!

**There are many ways that international students get involved on campus:**

- ✓ World Student Association
- ✓ Cultural Night – a night of international food, fashion and performances
- ✓ Student organizations focusing on academics, culture, religion, hobbies, politics, sports, and community service
- ✓ Athletics
  - Men: baseball, ice hockey, soccer, track, cross country, basketball
  - Women: soccer, ice hockey, track, volleyball, basketball, cross country
- ✓ Student government / School newspaper / Theatre / Superior Outdoor Adventure Program / Music ensembles / University Radio Station



# Fast facts,

## **UW-Superior:**

Public university emphasizing liberal arts and professional preparation through active learning, small classes and personal attention.

## **Location:**

Superior, Wisconsin (See map.) Part of the Superior-Duluth (Minnesota) metro area with 200,000+ people and 15,000 college students.

**Established:** 1893

**Student-Faculty Ratio:** 17:1

**Average Class Size:** 21 students

**Enrollment:** 2800

States represented: 26

Countries represented: 30

## **Accreditation:**

Commission of Institutions of Higher Education of the North Central Association of College and Schools.

## **Technology:**

- Fully wired campus with wireless network access
- Online library access
- Online course registration, grades, financial accounts and course management
- Free Internet and cable TV access in all residence hall rooms
- Computer labs in most buildings and all residence halls
- Technology Helpdesk
- Specialized labs for computer science and geographic information systems

**Weather:** There is something for everyone here - blossoming of flowers in spring, brilliantly colored leaves in fall, pleasantly sunny weather in summer, and a cold, snowy wonderland in winter.

## Costs, Financial Assistance and Student Employment

### **Undergraduate Costs for 2009-10**

|                             |                 |
|-----------------------------|-----------------|
| Non-resident Tuition & Fees | \$14,510        |
| *TAP Grant                  | (\$ 5,500)      |
| Residence Halls/Meals       | <u>\$ 5,485</u> |
|                             | \$14,795        |

(\*Note more than 90% of international students received Tuition Award Program - TAP - grants in 2009-10, which reduced non-resident tuition by \$5,500. The average annual cost increase in the U.S. is 5% - 6%.)

Other expected costs (per year): medical insurance \$840; books \$800.

UW-Superior awards **Global TAP Scholarships** worth \$2,000 (in addition to the \$5,500 TAP Grant) for students with a strong record of academic achievement. Special consideration is given to students who submit scores from the SAT, ACT, International Baccalaureate program, internationally-administered A-level exams or other national standardized tests. The awards are renewable for up to four years and subject to the award letter.

Many international students work on campus. Some international students are also eligible for \$500/year Becroft work loans.

International students who have already begun their studies at UW-Superior are eligible to apply for more than 100 Foundation Scholarships which are administered through the academic departments.

## Application Deadlines

Fall (Sept-Dec) Semester: July 1

Spring (Jan-May) Semester: November 1

## For more information, contact us

Email: [international@uwsuper.edu](mailto:international@uwsuper.edu)

Web: [www.uwsuper.edu/oip/](http://www.uwsuper.edu/oip/)

Phone: (715) 394-8052

Fax: (715) 394-8363

Mailing address:

Office of International Programs

UW-Superior; Old Main 337

Belknap & Catlin

Superior, WI 54880-4500

USA

UNIVERSITY of WISCONSIN

*Superior*

*Graduate School information available at  
[www.uwsuper.edu/graduate](http://www.uwsuper.edu/graduate).*

## Invitation to apply!

International students at UW-Superior have a long history of high academic achievement, leadership & involvement on campus, scholarship awards, athletic excellence, and success in the job market. We invite well-qualified international students from all parts of the world to apply to become part of a respected academic tradition.

In order to be admitted, students must submit the following.

- ✓ Application and \$44 application fee
- ✓ Official transcript reports
  - Freshmen:*** from all secondary/high schools attended
  - Students with internationally-administered A-levels or IB results are eligible to apply for transfer credit.
  - Transfer students:*** from all post-secondary/post-high schools attended in original language and translated to English if necessary.
- ✓ TOEFL, IELTS or other proof of English language proficiency (Note minimum TOEFL score: 500 PBT, 61 iBT; IELTS 5.5)
- ✓ SAT or ACT (Required of native-English speakers only.)

Other documents to be submitted:

- ✓ Financial Verification Form, bank documentation and letter of sponsorship showing ability and intent to pay for your education expenses.
- ✓ Tuition Award Program grant application form (recommended)

**IMPORTANT NOTE:** The University will only accept original official copies of transcripts, financial documents, score reports for SAT, TOEFL, IELTS, etc.

***Conditional admission:*** UW-Superior offers conditional admission to students who do not meet the English proficiency requirement. Students study English as a Second Language full-time at a language institute until they have met the English requirement. Please inquire for more information.