

# CAMPUS MASTER PLAN UPDATE



- Steering Committee Meeting
- January 22, 2014



# INTRODUCTIONS & ROLES

- University
- UW System
- DOA-DFD
- Consultants



# INTRODUCTIONS & ROLES

## ■ University

### ■ UW System

### ■ DOA-DFD

### ■ Consultants

#### ■ Master Planning Steering Committee

- Serve as an advisory committee on matters related to Master Facility Planning
- Discuss, explore and assess information pertaining to planning facility and site development options and solutions for UWS
- Serve as ambassadors for the Master Plan
- Report relevant information to and from the constituent groups they represent
- Participate in scheduled committee meetings, open forums and other activities

#### ■ Stakeholders

- Participate in stakeholder meetings
- Communicate with MPSC
- Provide feedback on plan as requested

# INTRODUCTIONS & ROLES

- University
- UW System
- DOA-DFD
- Consultants

- Capital Planning & Budget
  - Provide high-level guidance for plan development
  - Collaborate on project formation based on priorities & likely funding availability
  - Review plan document

# INTRODUCTIONS & ROLES

- University
- UW System
- DOA-DFD
- Consultants
  - Division of Facilities Development
    - Hold contract with consultant team
    - Administrative representative of the State Building Commission, who approves construction projects on all State of Wisconsin facilities
    - Provide high-level guidance for plan development
    - Review plan document

# INTRODUCTIONS & ROLES

- University
- UW System
- DOA-DFD
- Consultants

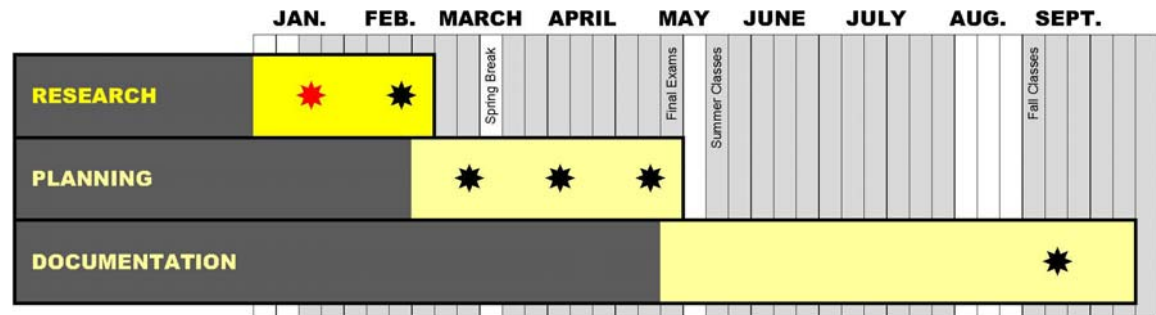
- Workshop Architects, Inc.
  - Project coordination & client communication
  - Architectural design guidelines
  - Document compilation & final graphics
- LHB, Inc.
  - Campus urban design/planning
    - Buildings
    - Landscape
    - Sports facilities
  - Facilities assessment
    - Buildings
    - Landscape
    - Utilities/Civil
  - Site design guidelines
- Paulien & Associates
  - Space utilization

# MASTER PLAN DEFINITION

- A **macro-level study** that establishes a **flexible & sustainable framework** for campus **development, renewal & enhancement** that best supports the **strategic plan & student success**

# PROCESS & SCHEDULE

- **Research**
  - Space needs data
  - Athletics/recreational sports
  - Previous master plan
  - Facility condition assessment
  - Infrastructure/utility condition assessment
  
- **Planning**  
concept explorations, development & refinement
  - Campus development
  - Phased implementation plan
  - Landscape improvement plan
  - Architectural & site design guidelines
  
- **Documentation**
  - Executive summary
  - Master plan documentation





# QUANTIFYING SPACE NEEDS

## Space Needs

### Metrics

- Enrollment
- Faculty and staff
- Academic delivery modalities
- Utilization expectations
- Program offerings

## Outcomes

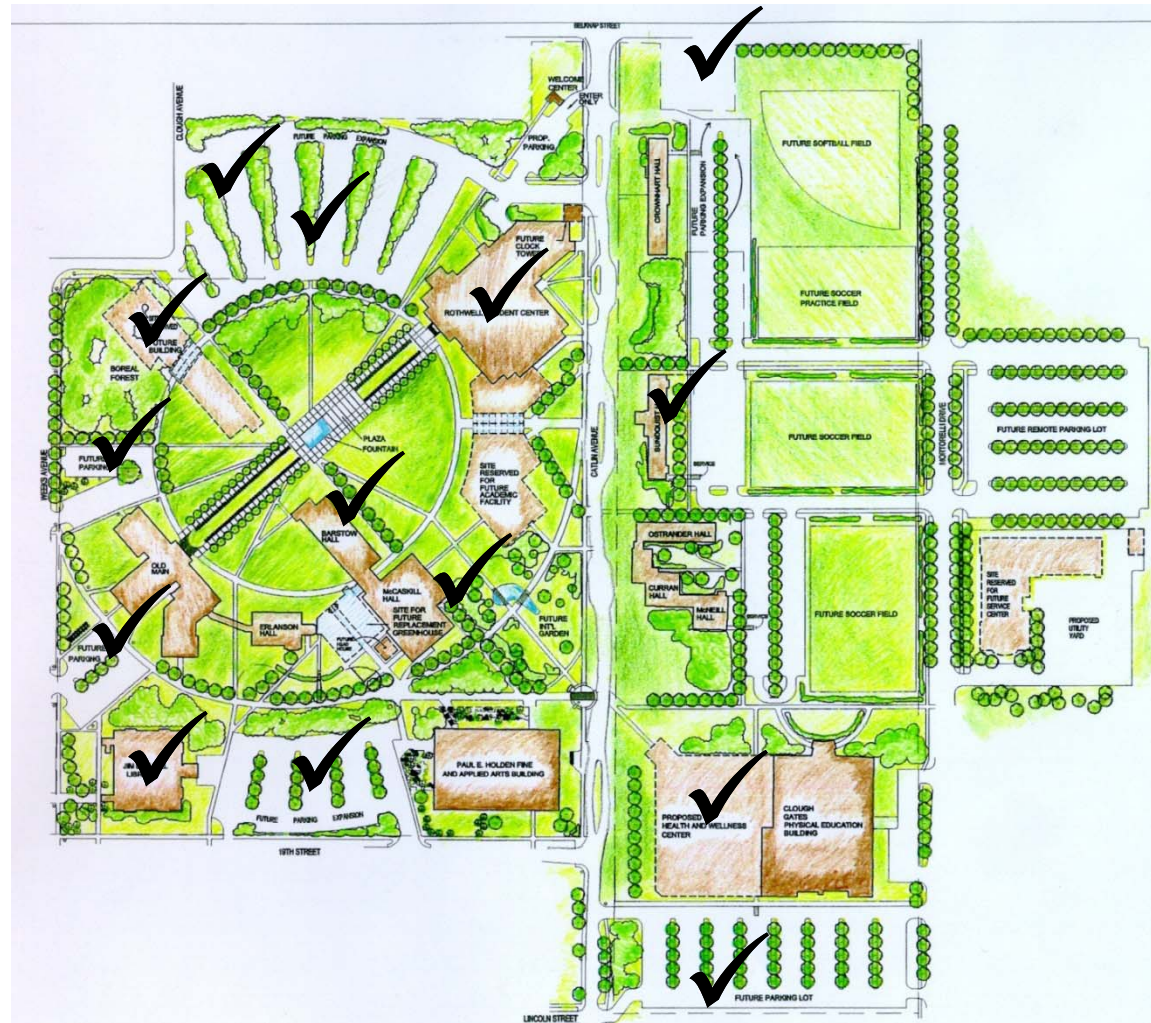
- Gap analysis of existing vs. ideal space amounts
- Dialogue concerning optimal program adjacencies
- Suggestions on program realignment
- Highest and best use of existing space
- Recommendations for new space





# 1999 MASTER PLAN

- Completed projects



# PLANNING GOALS

- Support student success
- Optimize facility assets
- Enhance campus placemaking
- Develop sustainable vision & framework for campus development



# PLANNING GOALS

- Support student success

- Optimize facility assets

- Enhance campus placemaking

- Develop sustainable vision & framework for campus development

- Support academic master plan
- Improve learning environments
- Enhance instructional support
- Anticipate educational trends
- Enable access to changing technology
- Accommodate changing demographics
- Enrich student life opportunities
- Enhance intramural & intercollegiate athletics facilities

# PLANNING GOALS

- Support student success
- Optimize facility assets
- Enhance campus placemaking
  - Align the physical environment with institutional values, priorities, & goals
  - Increase space utilization
  - Support asset preservation & life safety
- Develop sustainable vision & framework for campus development

# PLANNING GOALS

- Support student success
- Optimize facility assets
- Enhance campus placemaking
  - Connect to community
  - Define campus borders & entry
  - Improve pedestrian wayfinding, walkability, & safety
  - Enhance campus aesthetics
  - Promote campus image & identity
- Develop sustainable vision & framework for campus development

# PLANNING GOALS

- Support student success
- Optimize facility assets
- Enhance campus placemaking
- Develop sustainable vision & framework for campus development

- Support capital funding requests
- Use available funding efficiently
- Expand sustainable strategies
  - Infrastructure
  - Environment
  - Economic
  - Social
  - Governance



# ACADEMIC SPACE UTILIZATION

UNIVERSITY OF WISCONSIN • SUPERIOR

## Classroom Utilization Analysis by Building

Room Id	Room Use Code	Assignable Sq. Ft.	No. of Stations	Assignable Sq. Ft. Per Station	Average Enrollment	Weekly Student Contact Hours	Weekly Seat Hours	Weekly Room Hours	Hours in Use Student Station Occupancy %
<b>Barstow Hall</b> <span style="float: right;"><b>No. of Rooms = 1</b></span>									
BAR 0108	110	1,200	81	15	20	287	3.5	15	24%
<i>Average</i>		1,200	81	15	20		3.5	15	24%
<i>Total</i>		1,200	81			287		15	
<b>Erlanson Hall</b> <span style="float: right;"><b>No. of Rooms = 7</b></span>									
ERL 0102	110	890	37	24	15	267	7.2	18	40%
ERL 0106	110	350	16	22	11	66	4.1	6	69%
ERL 0201	110	875	46	19	20	639	13.9	31	45%
ERL 0202	110	908	37	25	20	546	14.8	27	55%
ERL 0203	110	550	38	14	23	367	9.7	16	60%
ERL 0205	110	961	68	14	27	945	13.9	36	39%
ERL 0208	110	744	28	27	21	384	13.7	18	76%
<i>Average</i>		754	39	21	20		11.9	22	51%
<i>Total</i>		5,278	270			3,214		152	
<b>Holden Fine &amp; Applied Arts Center</b> <span style="float: right;"><b>No. of Rooms = 9</b></span>									
HFA 1120	110	323	15	22	8	45	3.0	6	50%
HFA 1124	110	420	30	14	16	237	7.9	15	53%
HFA 1174	110	347	30	12	20	561	18.7	20	94%
HFA 1181	110	368	20	18	23	486	24.3	14	174%
HFA 1183	110	405	3	135	15	219	73.0	15	487%
HFA 1215	110	361	20	18	40	527	26.4	11	240%
HFA 2107	110	400	20	20	20	483	24.2	24	101%
HFA 2113	110	375	20	19	16	342	17.1	21	81%
HFA 2125	110	722	66	11	29	995	15.1	35	43%
<i>Average</i>		413	25	30	21		17.4	18	130%
<i>Total</i>		3,721	224			3,895		161	
<b>Marcovich Wellness Center</b> <span style="float: right;"><b>No. of Rooms = 4</b></span>									
MWC 1608	110	745	0	0	15	203	#Drw!	14	0%
MWC 2430	110	800	40	20	17	300	7.5	17	44%
MWC 2440	110	1,340	60	22	26	443	7.4	17	43%
MWC 2721	110	2,500	0	0	35	212	#Drw!	6	0%
<i>Average</i>		1,346	25	11	23		11.6	14	28%
<i>Total</i>		5,385	100			1,158		54	
<b>Old Main</b> <span style="float: right;"><b>No. of Rooms = 3</b></span>									
OM 0302	110	780	30	26	0	0	0.0	0	0%
OM 0303	110	565	38	15	0	0	0.0	0	0%
OM 0322	110	960	80	12	0	0	0.0	0	0%
<i>Average</i>		768	49	18	0	0	0.0	0	0%
<i>Total</i>		2,305	148			0		0	

UNIVERSITY OF WISCONSIN • SUPERIOR

## Classroom Utilization Analysis by Building

Room Id	Room Use Code	Assignable Sq. Ft.	No. of Stations	Assignable Sq. Ft. Per Station	Average Enrollment	Weekly Student Contact Hours	Weekly Seat Hours	Weekly Room Hours	Hours in Use Student Station Occupancy %
<b>Swenson Hall</b> <span style="float: right;"><b>No. of Rooms = 24</b></span>									
SW 1004	110	2,364	146	16	70	529	3.6	8	45%
SW 1012	110	1,820	80	23	28	971	12.1	35	35%
SW 1013	110	1,734	80	22	42	663	8.3	17	49%
SW 1016	110	736	40	18	32	798	20.0	27	74%
SW 1054	110	1,258	60	21	15	498	8.3	28	30%
SW 1055	110	1,214	60	20	23	538	9.0	23	39%
SW 1056	110	1,214	60	20	27	745	12.4	28	44%
SW 1057	110	900	40	23	20	757	18.9	44	43%
SW 2002	110	784	30	26	11	157	5.2	14	37%
SW 2003	110	644	24	27	8	72	3.0	9	33%
SW 2004	110	759	24	32	14	42	1.8	3	58%
SW 2009	110	990	40	25	22	651	16.3	30	54%
SW 2010	110	990	40	25	18	654	16.4	36	45%
SW 2011	110	900	40	23	21	753	18.8	36	52%
SW 2012	110	918	40	23	18	600	15.0	33	45%
SW 2015	110	475	16	30	13	288	18.0	21	86%
SW 2016	110	882	40	22	17	360	9.0	21	43%
SW 2017	110	882	40	22	18	680	17.0	37	46%
SW 2020	110	966	30	32	19	57	1.9	3	63%
SW 3002	110	1,540	60	26	26	856	14.3	32	45%
SW 3003	110	1,050	40	26	18	307	7.7	17	45%
SW 3005	110	594	18	33	18	648	36.0	22	164%
SW 3008	110	1,440	60	24	26	759	12.6	30	43%
SW 3009	110	1,440	60	24	25	643	10.7	26	41%
<i>Average</i>		1,104	49	24	23		11.2	24	51%
<i>Total</i>		26,494	1,168			13,026		580	
<b>AVERAGE TOTAL</b>		925	41	23	21		10.8	20	63%
<b>NO. OF ROOMS</b>		44,383	1,991			21,580		902	
		48							

# ACADEMIC SPACE UTILIZATION

UNIVERSITY OF WISCONSIN • SUPERIOR

## Teaching Laboratory Utilization Analysis by Building

Room Id	Room Use Code	Assignable Sq. Ft.	No. of Stations	Assignable Sq. Ft. Per Station	Average Enrollment	Weekly Student Contact Hours	Weekly Seat Hours	Weekly Room Hours	Hours in Use Student Station Occupancy %
<b>Barstow Hall</b>									<b>No. of Rooms = 8</b>
BAR 0102	210	543	18	30	15	185	10.3	13	79%
BAR 0107	210	1,252	32	39	15	186	5.8	12	48%
BAR 0114	210	1,021	36	28	11	226	6.3	19	33%
BAR 0210	210	1,055	11	96	12	289	26.3	24	109%
BAR 0211	210	862	16	54	0	0	0.0	0	0%
BAR 0309	210	1,354	30	45	11	84	2.8	8	37%
BAR 0310	210	1,134	48	24	23	204	4.3	9	47%
BAR 0314	210	998	18	55	12	64	3.6	6	61%
<i>Average</i>		1,027	26	46	12		5.9	11	66%
<i>Total</i>		8,219	209			1,238		90	

<b>Holden Fine &amp; Applied Arts Center</b>									<b>No. of Rooms = 14</b>
HFA 1125	210	890	18	49	10	60	3.3	6	56%
HFA 1127	210	434	15	29	16	230	15.4	14	107%
HFA 1128	210	435	15	29	0	0	0.0	0	0%
HFA 1129	210	827	21	39	12	72	3.4	6	57%
HFA 1133	210	1,679	12	140	0	0	0.0	0	0%
HFA 1135	210	1,145	20	57	15	270	13.5	18	75%
HFA 1202	210	631	20	32	9	133	6.7	13	52%
HFA 1221	210	456	10	46	8	48	4.8	6	80%
HFA 2127	210	1,163	24	48	10	60	2.5	6	42%
HFA 2133	210	2,319	45	52	24	674	15.0	21	71%
HFA 3118	210	1,063	30	35	20	463	15.4	23	69%
HFA 3119	210	1,046	25	42	26	256	10.2	10	105%
HFA 3124	210	985	15	66	0	0	0.0	0	0%
HFA 3125	210	274	0	0	14	84	#Div/0!	6	0%
<i>Average</i>		953	19	47	12		8.7	9	70%
<i>Total</i>		13,347	270			2,350		128	

<b>Marcovich Wellness Center</b>									<b>No. of Rooms = 1</b>
MWC 1725	210	1,760	18	98	15	186	10.3	12	86%
<i>Average</i>		1,760	18	98	15		10.3	12	86%
<i>Total</i>		1,760	18			186		12	

<b>Old Main</b>									<b>No. of Rooms = 1</b>
OM 0128	210	440	12	37	0	0	0.0	0	0%
<i>Average</i>		440	12	37	0		0.0	0	0%
<i>Total</i>		440	12			0		0	

<b>Swenson Hall</b>									<b>No. of Rooms = 12</b>
SW 1017	210	854	20	43	12	191	9.5	19	51%
SW 1024	210	948	30	32	0	0	0.0	0	0%
SW 1030	210	729	10	73	0	0	0.0	0	0%

UNIVERSITY OF WISCONSIN • SUPERIOR

## Teaching Laboratory Utilization Analysis by Building

Room Id	Room Use Code	Assignable Sq. Ft.	No. of Stations	Assignable Sq. Ft. Per Station	Average Enrollment	Weekly Student Contact Hours	Weekly Seat Hours	Weekly Room Hours	Hours in Use Student Station Occupancy %
SW 1042	210	1,215	24	51	21	696	29.0	33	88%
SW 1043	210	1,161	24	48	21	696	29.0	33	88%
SW 2033	210	998	24	42	9	243	10.1	28	36%
SW 2034	210	1,008	24	42	13	282	11.8	21	56%
SW 2035	210	986	32	31	16	332	10.4	21	51%
SW 3011	210	892	24	37	17	414	17.3	26	66%
SW 3069	210	1,080	24	45	0	0	0.0	0	0%
SW 3119	210	620	16	39	0	0	0.0	0	0%
SW 3127	210	611	18	34	0	0	0.0	0	0%
<i>Average</i>		925	23	43	9		10.6	15	65%
<i>Total</i>		11,102	270			2,853		180	
<b>AVERAGE</b>		969	22	<b>47</b>	11		8.5	<b>11</b>	<b>67%</b>
<b>TOTAL</b>		34,868	779			6,626		411	
<b>NO. OF ROOMS</b>			36						

# IMPORTANCE OF PLACE

- Campus Aesthetics & Vision
  - Communicate campus care & pride through buildings & landscape that are
    - Well-maintained
    - Aesthetically pleasing
  - Enhance pedestrian wayfinding, walkability, safety
  - Connect to community & define campus borders & entry
- Living & Learning Environments
  - Optimize the natural setting for student learning & success
  - Include informal & social spaces beyond the classroom
  - Create a variety of spaces that are
    - Flexible
    - Comfortable
    - Human-scaled

# BREAK

- 5 minutes



# ACTIVITY | FABULOUS/FLOP

- In regards to the Campus Master Plan Update:
  - What three things would make it **fabulous**?
  - What three things would make it a **flop**?

## FABULOUS/FLOP

What three things would make the Campus Master Plan Update fabulous?

1	
2	
3	

What three things would make the Campus Master Plan Update a flop?

1	
2	
3	

# ACTIVITY | MAPPING

1. Identify the campus 'front door'
  2. Identify the campus 'back door'
  3. Identify the most convenient parking lot on campus
  4. Identify the most pleasant walk on campus
  5. Identify the view that best captures the essence of campus
  6. Identify the most prominent landmark on campus
  7. Identify the best building on campus
  8. Identify the most 'sacrosanct' element of the campus
  9. Identify the best place to meet people on campus
  10. Identify the most pleasant place to be on campus
- 
- A. Identify the least pleasant walk on campus
  - B. Identify the least pleasant place to be on campus
  - C. Identify the worst building on campus

# NEXT STEPS

- Review action items
- Comments/questions
- Next steering committee meeting –  
Tuesday, February 18<sup>th</sup>, 2014

# THANK YOU

