

## SPSS for Mac Installation Instructions

Click on the “SPSS Mac Download” link on the Resources webpage. Once you have clicked on the link, follow these instructions for installation:

1. Enter your University of Wisconsin - Superior credentials and click “Login.”



UNIVERSITY of WISCONSIN  
*Superior*

Welcome, please login

UWS User ID:

Password:

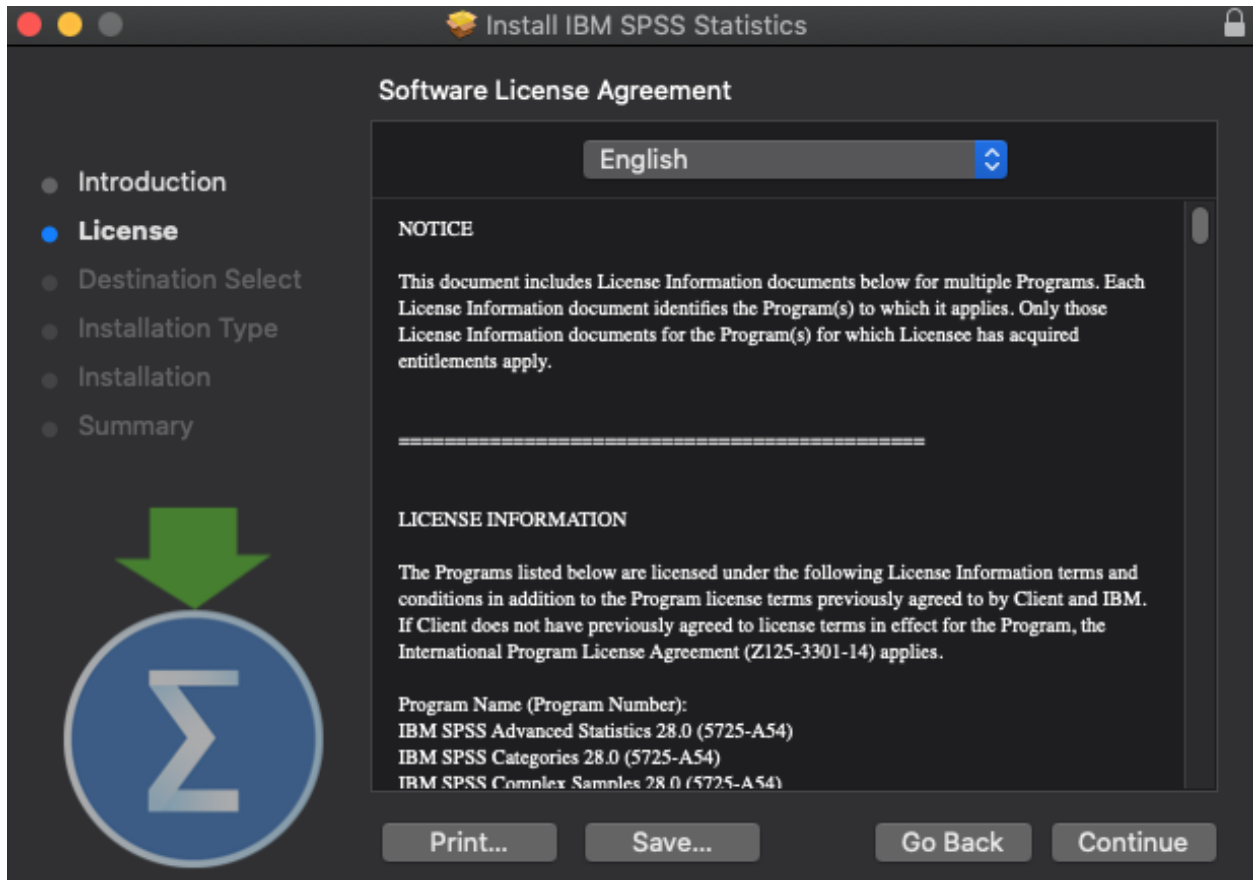
 Login

2. Once logged in successfully there will be an option to “Open,” “Save,” “Save as,” or “Allow.” You will want to save this to a location of your choice. This is a big file and might take a few minutes to download.
3. Once this is saved, you can then close the UWS web site and navigate to where the file was saved.

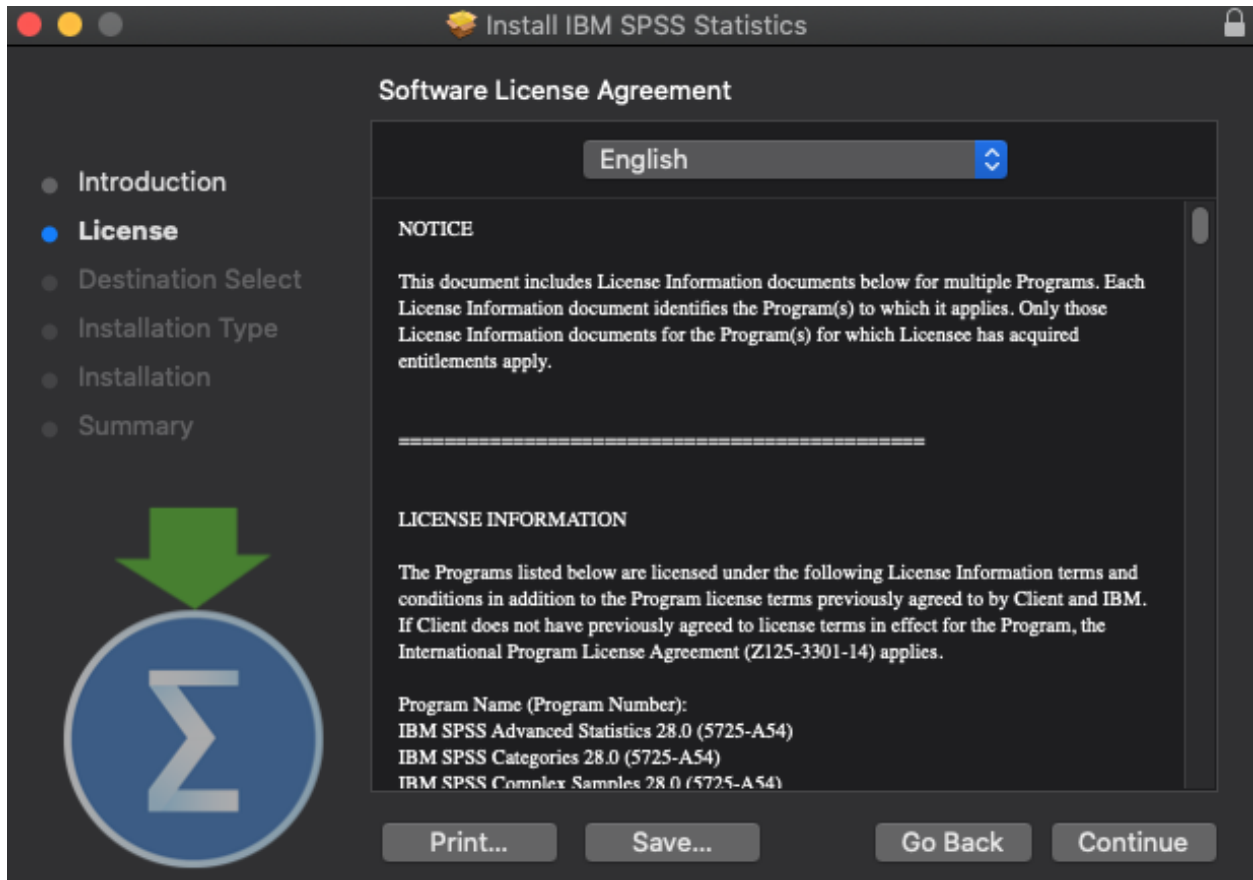
The user can now right click on the file and select “Open.” This will extract the following files:

- “SPSS v28 Authorization code.text” Folder which contains: ▪ Licensing
- “SSC\_28.00.00\_MacOS.pkg”

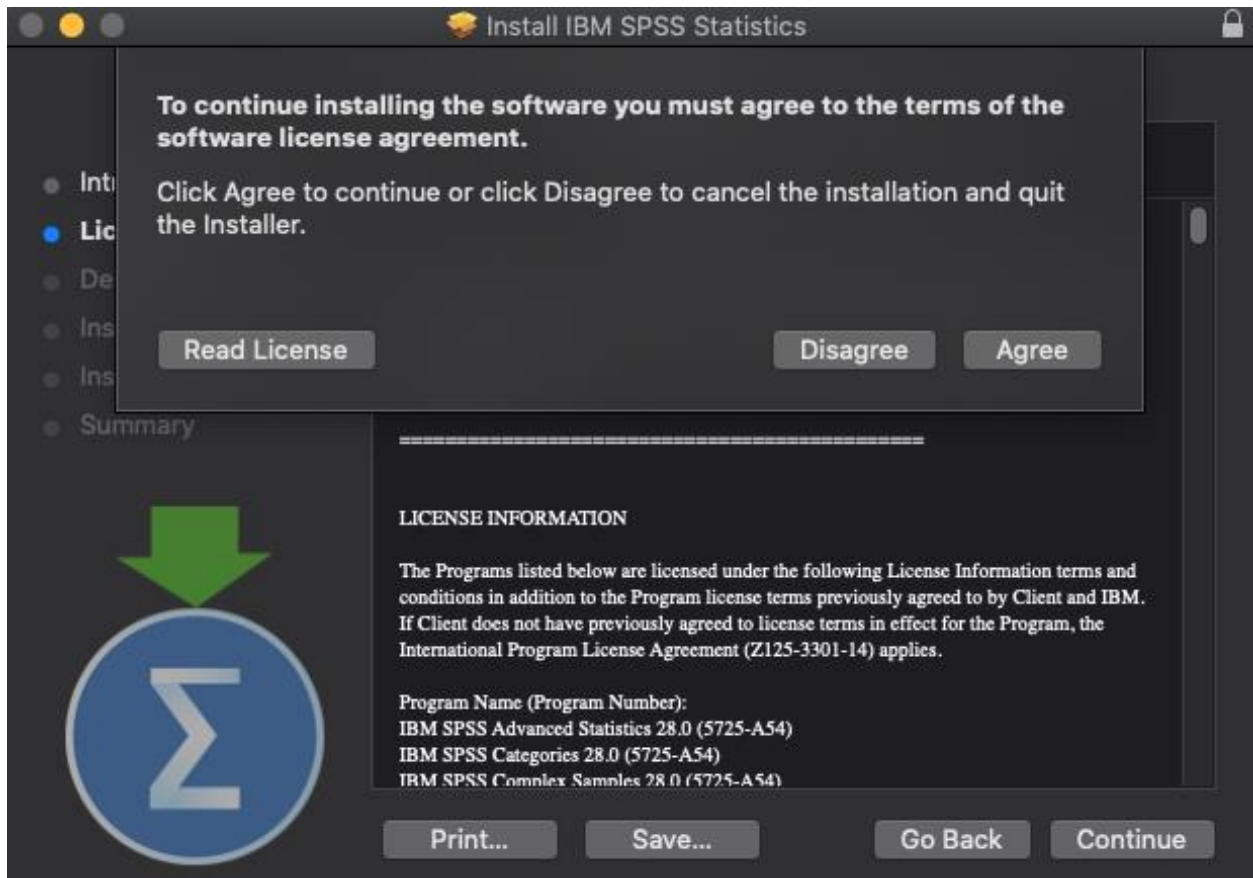
4. Double click on the “SSC\_28.00.00\_MacOS.pkg” to open the program.
5. A prompt should start the SPSS installer.



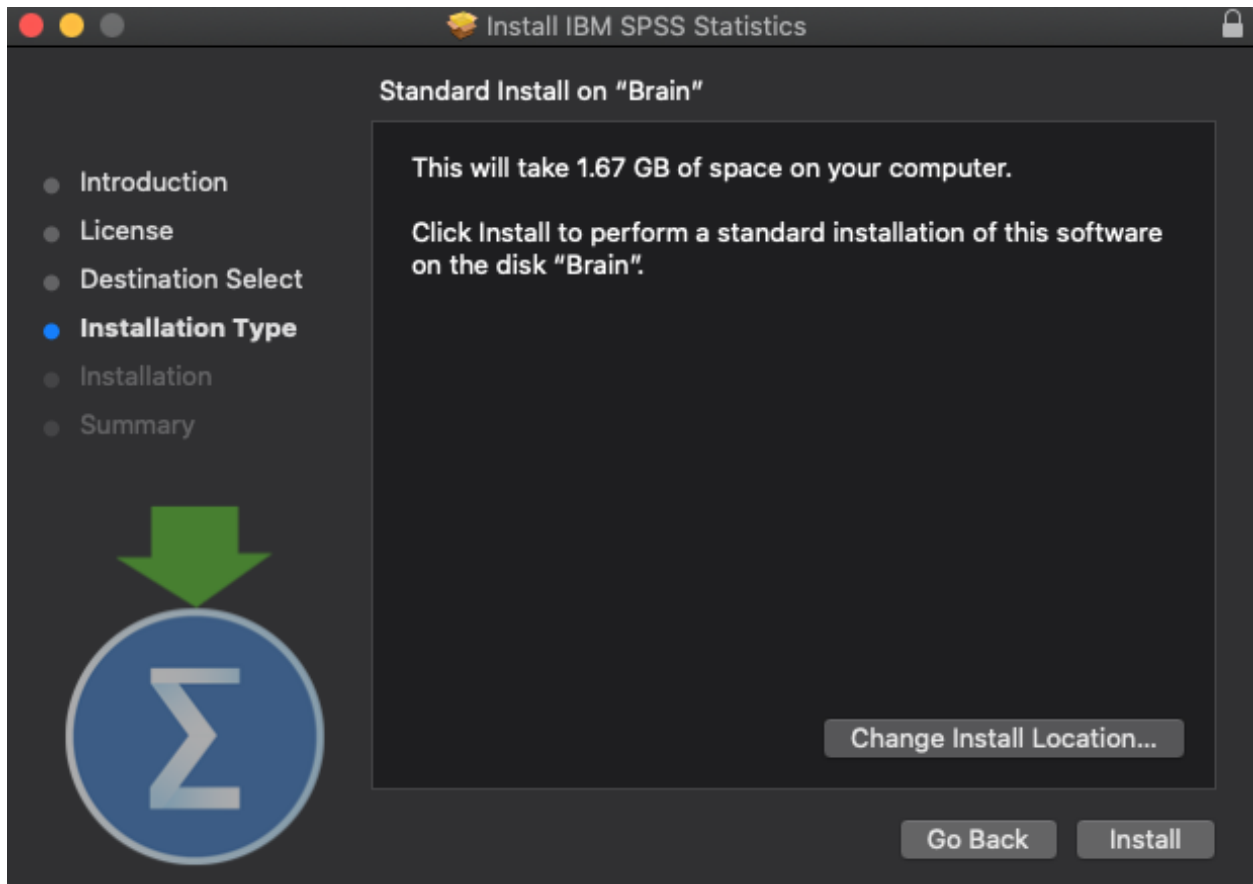
6. Click Continue to start the installation.



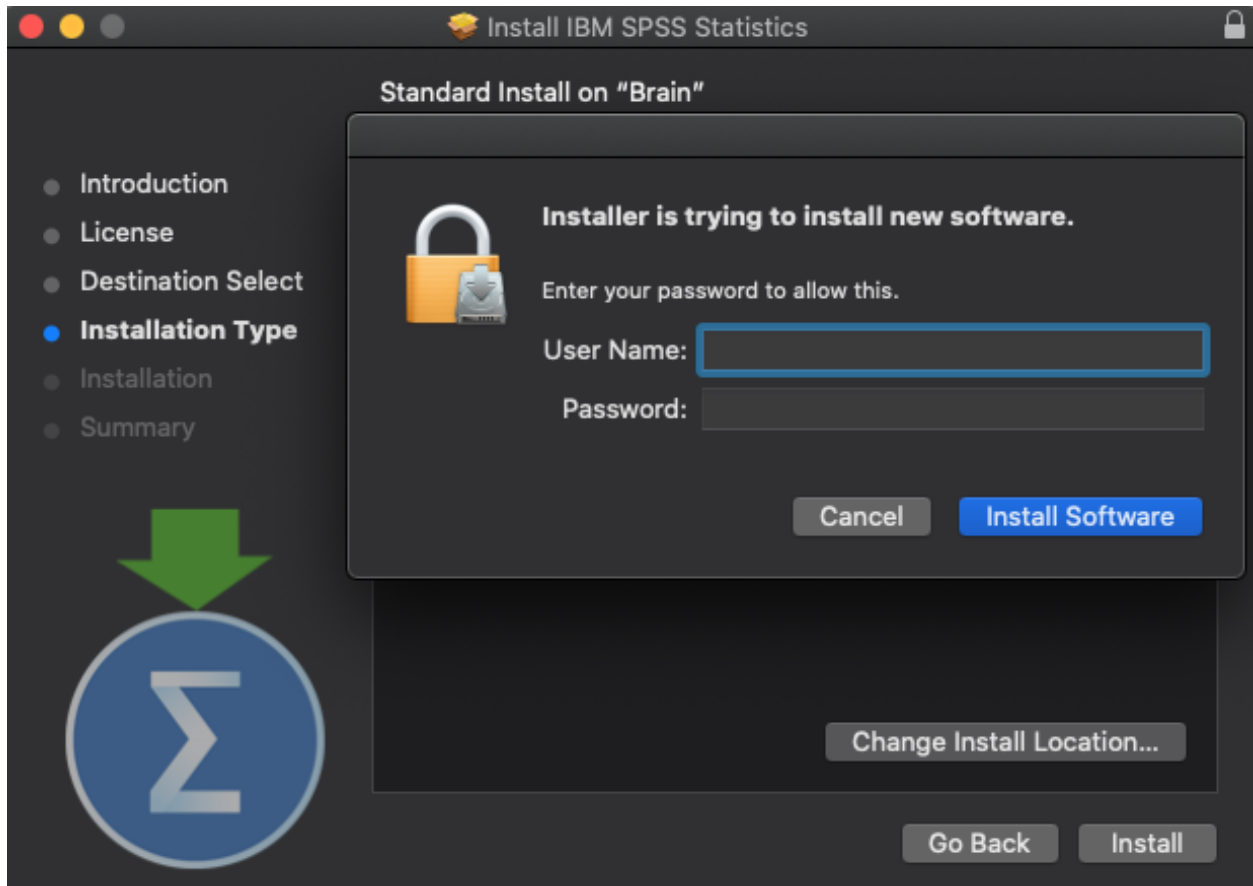
7. You may be asked for your admin code to install. At this time, you will need to enter it to continue.



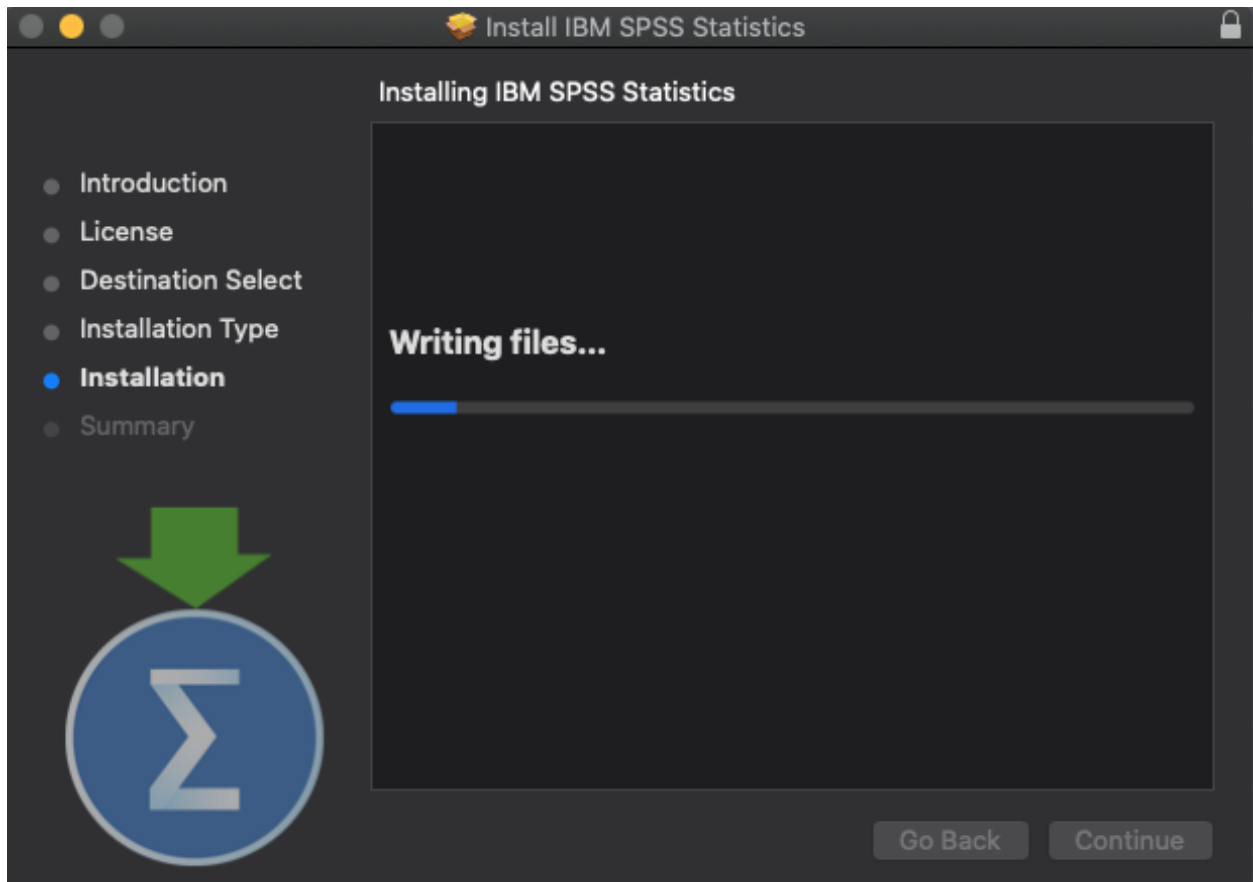
8. Select Agree to the Terms of Service agreement.



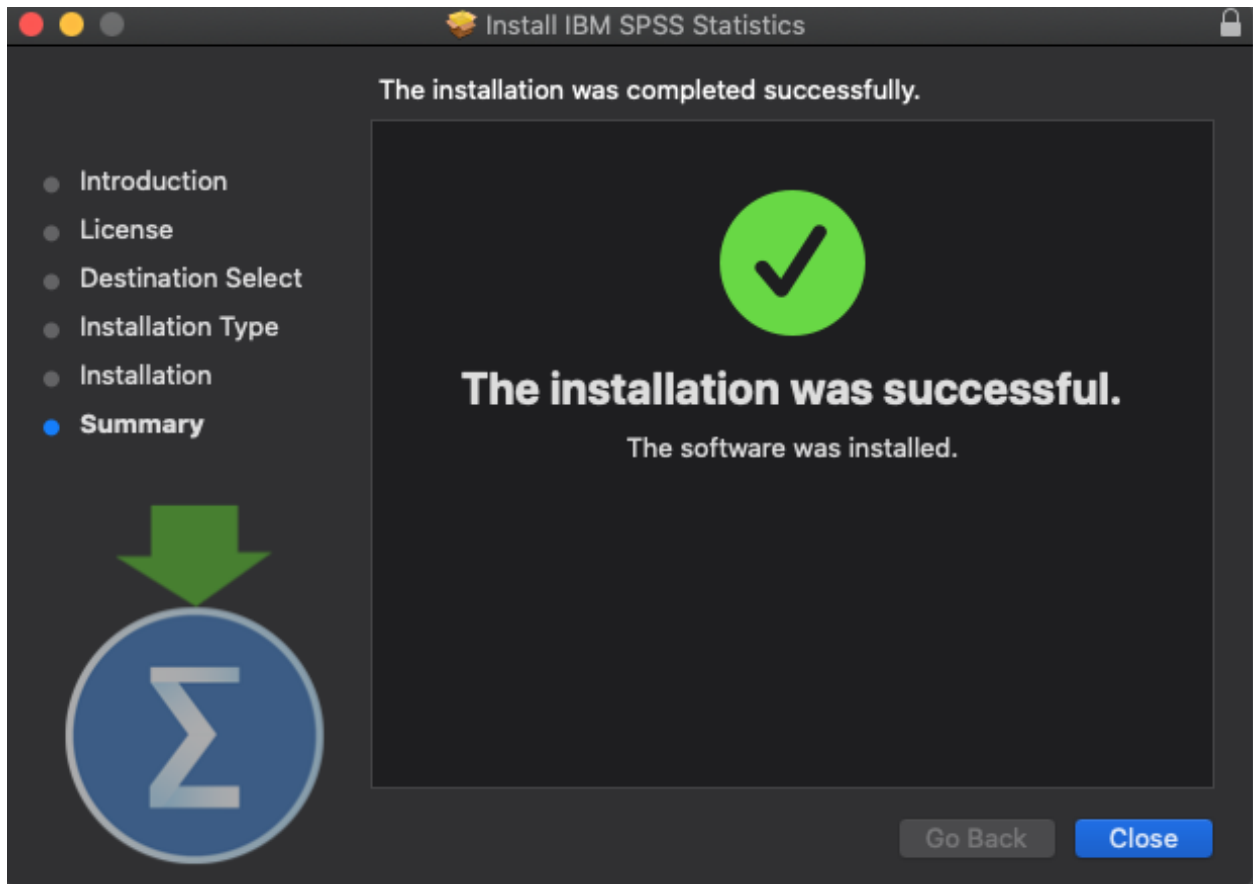
9. Select Install, ensure you have enough free disk space for the application



10. You should be prompted to input your personal credentials then click next.

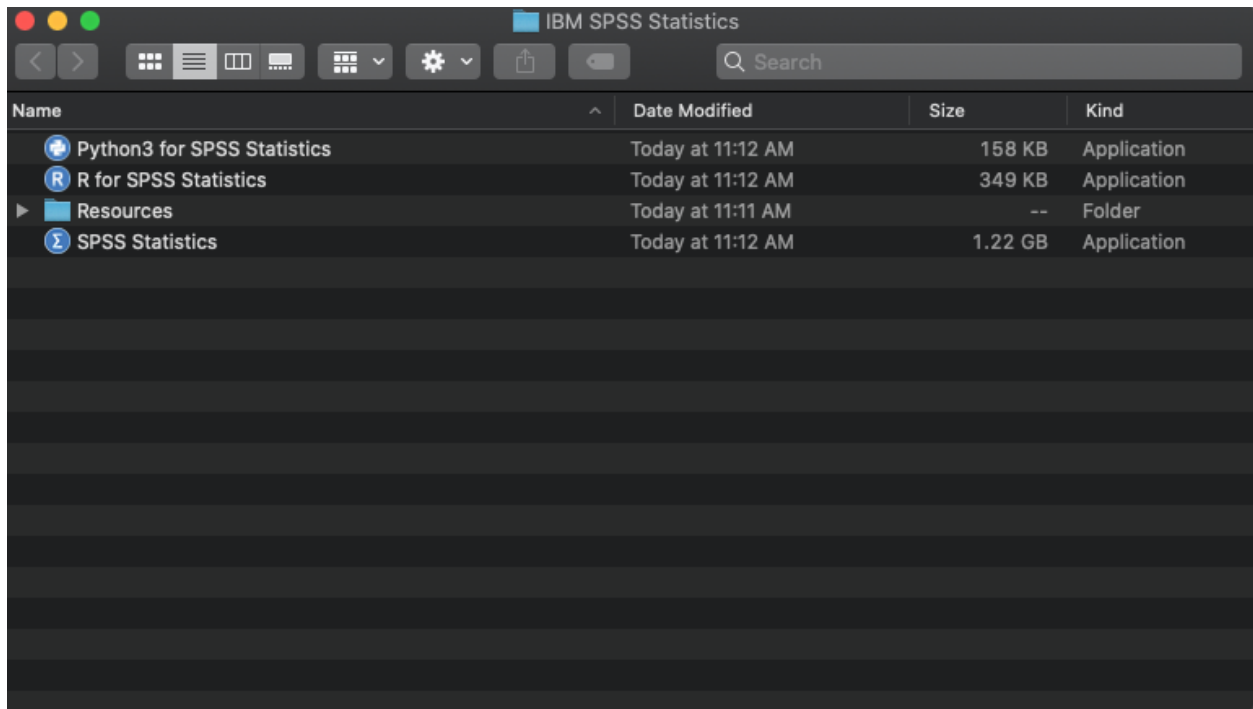


11. SPSS 28 should then start the installation



12. Once the installation is complete you should see the following window, you may close the install window now.





13. SPSS will automatically open this folder once complete. Open the SPSS Statistic.



14. Choose “Launch License Wizard”

### License Status

You are currently licensed for the following:

License information for IBM SPSS Statistics installed in /Applications/IBM SPSS Statistics/Resources/Activation  
No licenses found for IBM SPSS Statistics 28. ErrCode=1 SubCode=18

Next >

Cancel

14. When this window is shown select next.

## Product Authorization

---

Select one of the following:

- Authorized user license (I purchased a single copy of the product).  
You will be asked to enter the authorization code(s) or license code(s) that you received from IBM.

[Example Codes](#)

- Concurrent user license (My organization purchased the product and my administrator gave me a computer name or IP address).

Lock Code for this machine is: 10-4AFAP

[What is a Lock Code?](#)

---

< Back

Next >

Cancel

15. Select “Authorized User License” and click “Next.”

## Enter Codes

Enter your authorization code(s) here to license your product. If you have already contacted IBM via email or phone, please enter the license code(s) you received from IBM.

[Licensing Overview](#)

[Example Codes](#)

Enter Code:

Add

Remove Code

The authorization code(s) will be electronically sent to IBM.

[Proxy Server Settings](#)

< Back

Next >

Cancel

16. Enter the following code in the licensing window: c31b9d9055d800207fa1. Click “Add” then, “Next.” (This step requires internet access to validate the product key)

### Internet Authorization Status

Copy Status

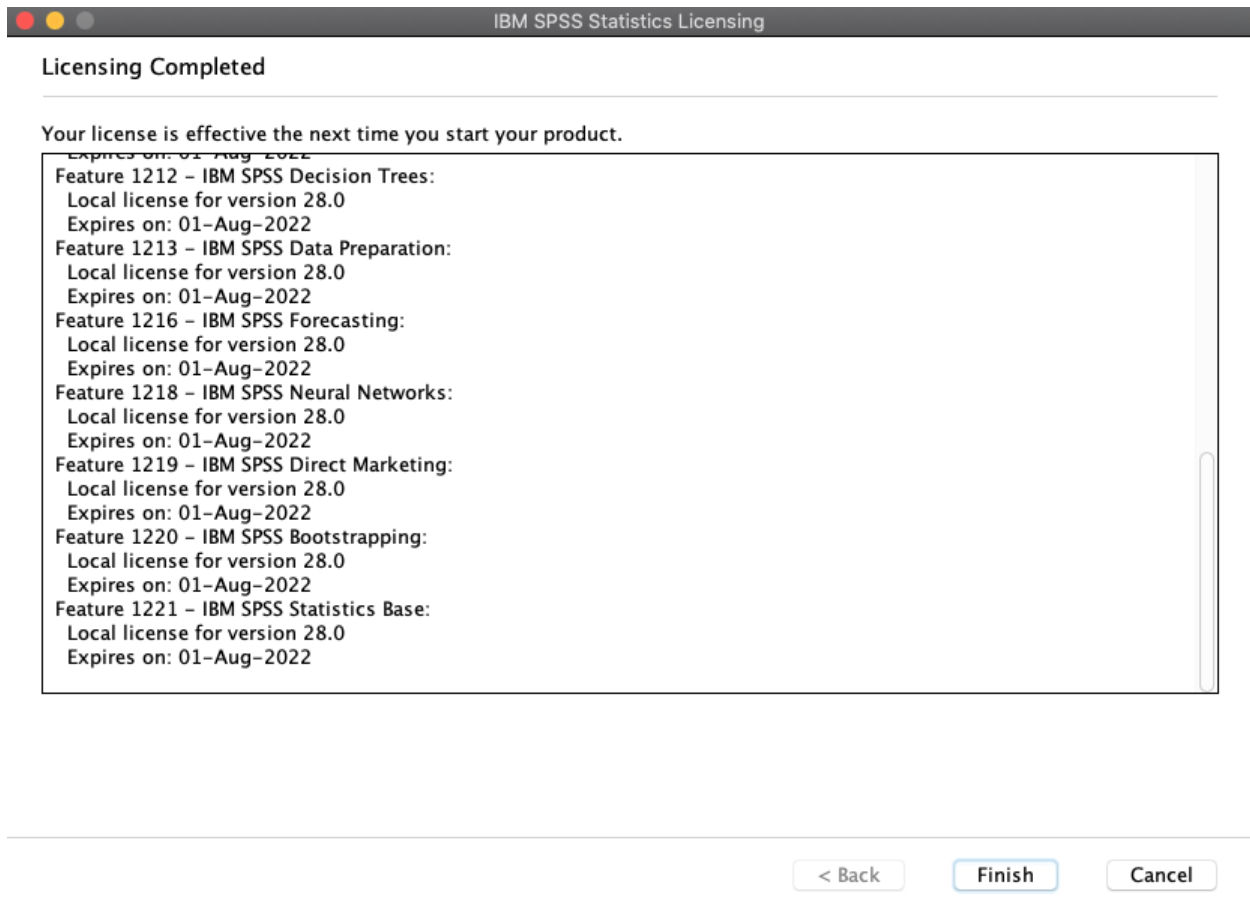
```
Authorization in progress ... (c31b9d9055d800207fa1)
Authorization succeeded:
License Code:
J7Q5XAQXWZGIGSU7H7OZL3SRGJS6VHAK6VV737OALZAZX35TL8YU6ZF63Q7OMKL43I6V2NJMQWAGKRQUCWVU3P69VWD6PCSL
*** End Of Transaction. ***
Successfully processed all codes
```

< Back

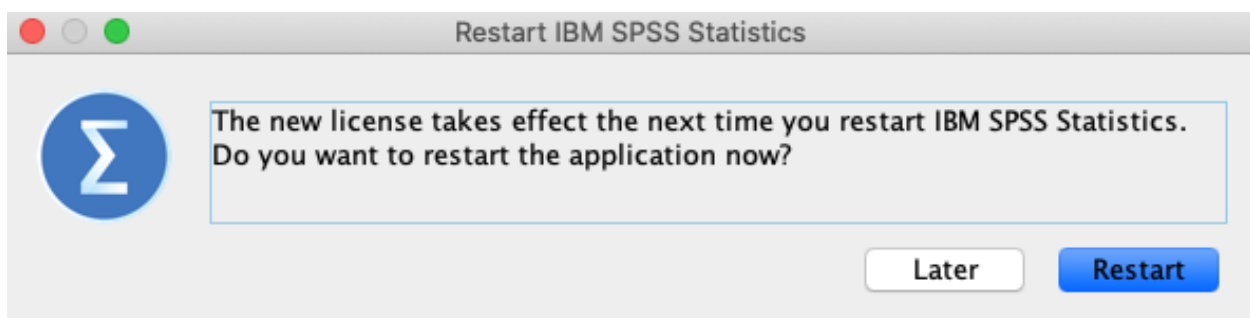
Next >

Cancel

17. Once the authorization has succeeded, click “Next.”



18. On the next screen should see "Licensing Completed". Select "Finish". Then open the software on your computer, SPSS 28 should now be installed.



19. The system may ask you to restart SPSS Statistics. Select "Restart".

20. The next time you open SPSS Statistics, choose "Apply License" (This is a one time thing).