

SPSS for Windows Installation Instructions

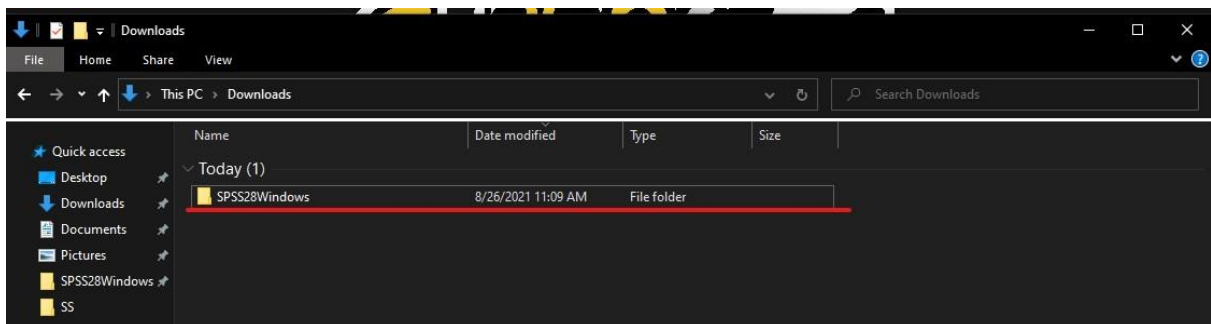
- Click on the “SPSS Windows Download” link on the Resources webpage.
 - Once you have clicked on the link, follow these instructions for installation:
1. Enter your University of Wisconsin - Superior credentials and click "Login."



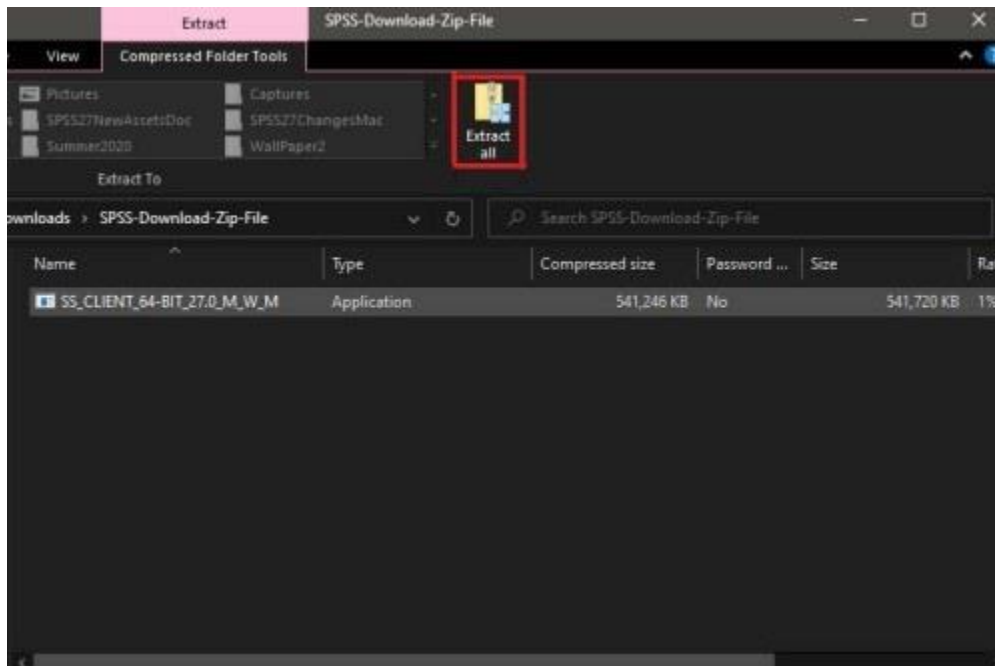
2. A pop up box should appear at the bottom of your browser window indicating a .zip file is being downloaded. Once its downloaded click on the .zip file.



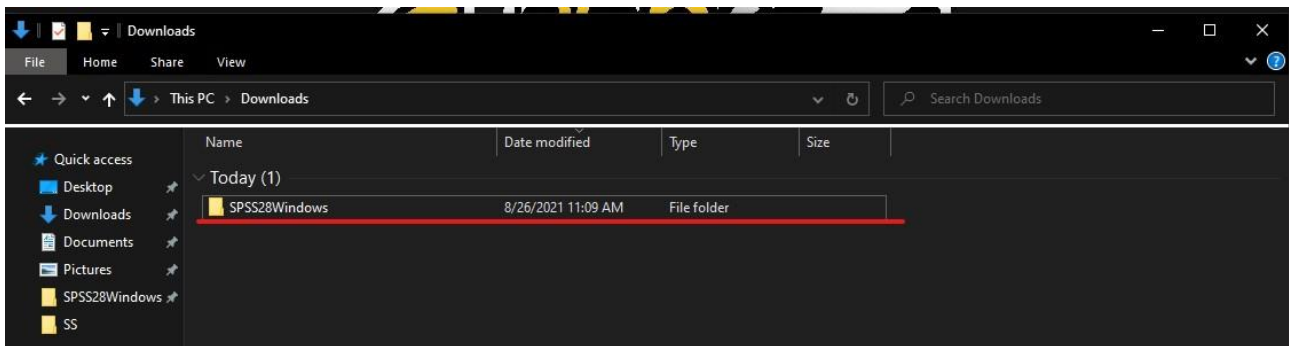
3. A new file explorer window should pop up containing the folder “SPSS28Windows” double click to open it



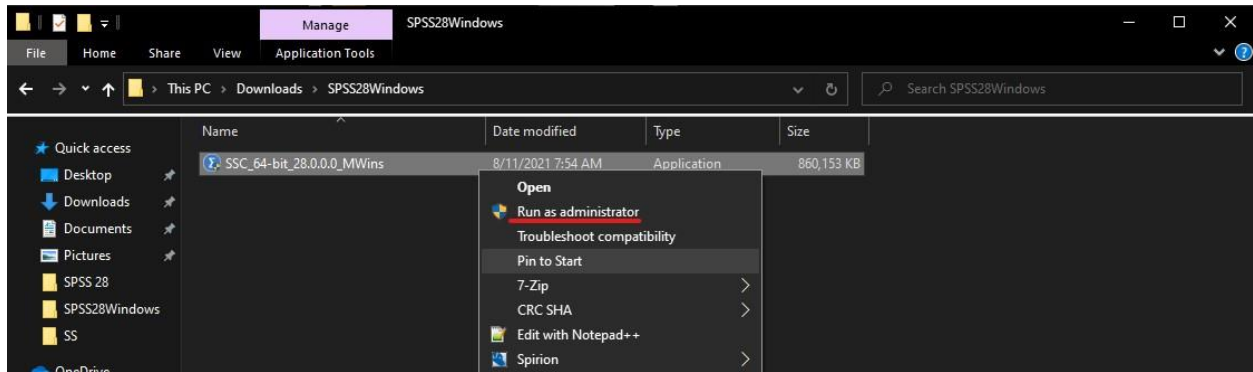
4. Double click on IBM SPSS Statistics Client. Click “Extract All.” You can have the files extracted in the current folder or selecting a custom destination by clicking “Browse.”



5. Once the files have been extracted, double click on the “SPSS28Windows” folder.



6. Right click on “SPSS_Statistics_28_winw64.exe” and select “Run as administrator”

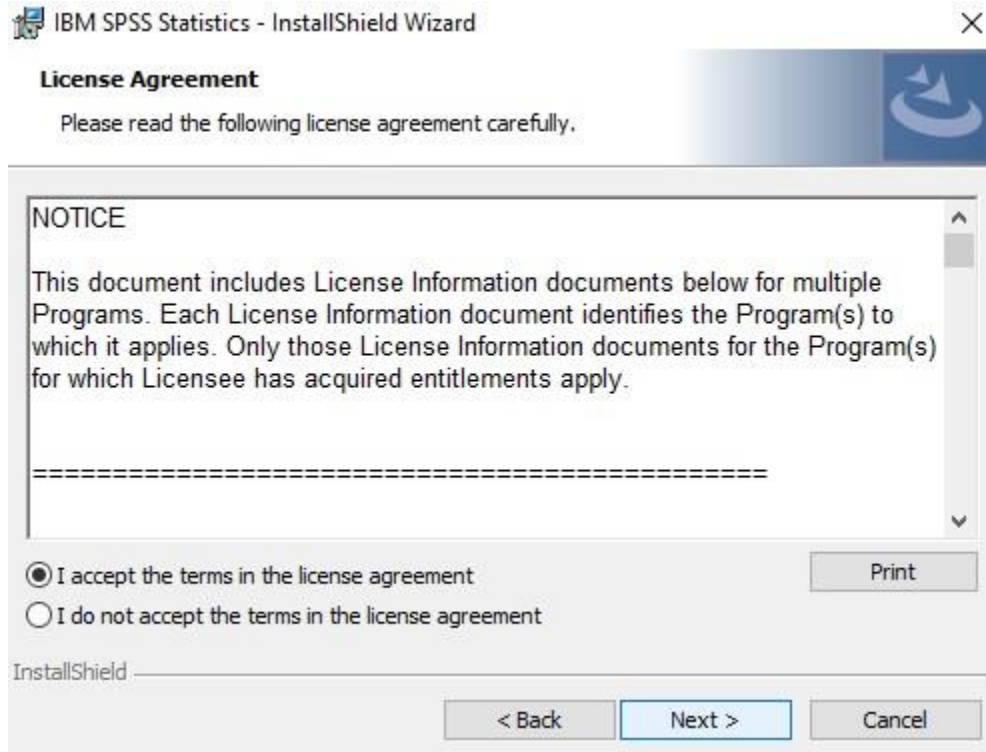


7. You will then get a “User Account Control Window” prompt, it will either pop up on your screen, or show up as a notification in the task bar as a blinking shield on the program icon. If you the control window opens on its own click “Yes”, if not click the shield Icon on that pop up and choose “Yes.”

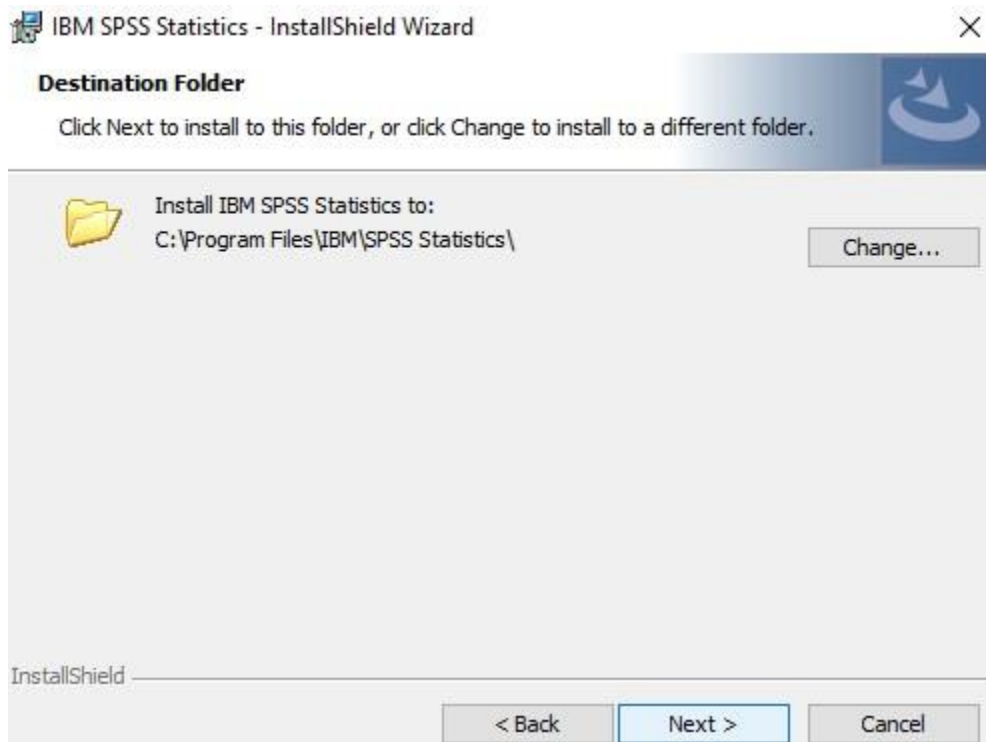
8. Once you have granted the permissions you should see the following window, select “Next.”



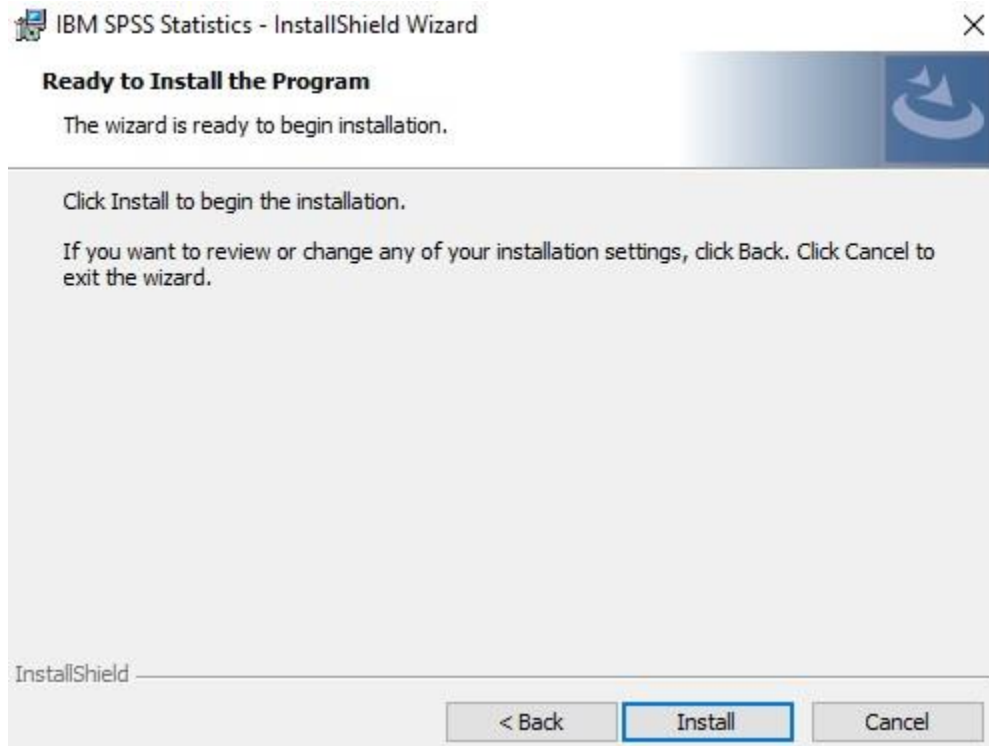
9. Accept the terms and conditions and click “Next.”



10. This Prompt will allow you to change in the install location. You can leave it default and select next.



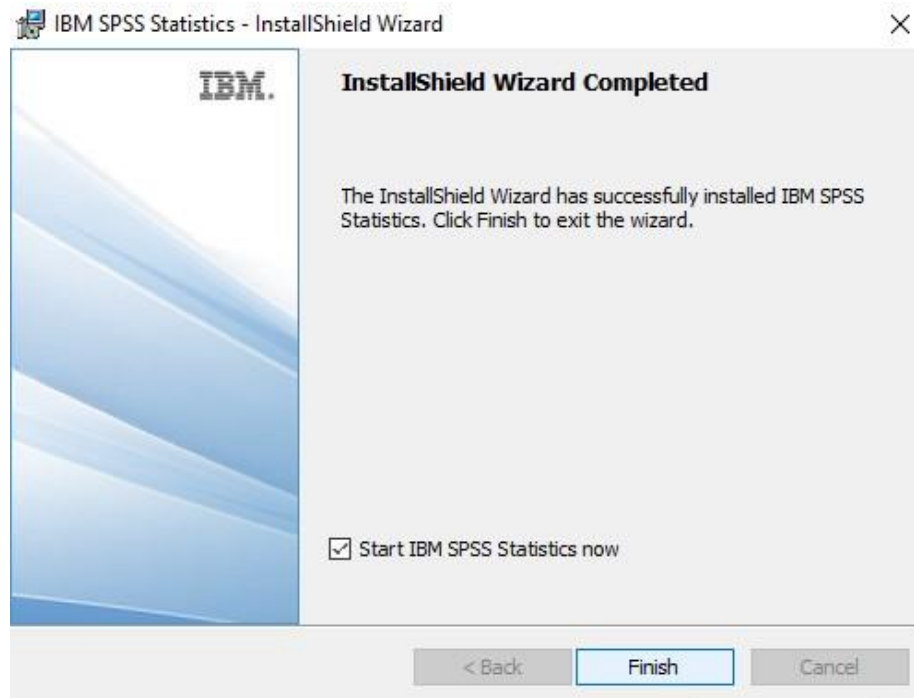
11. Next you will be prompted to start the install, simply select install.



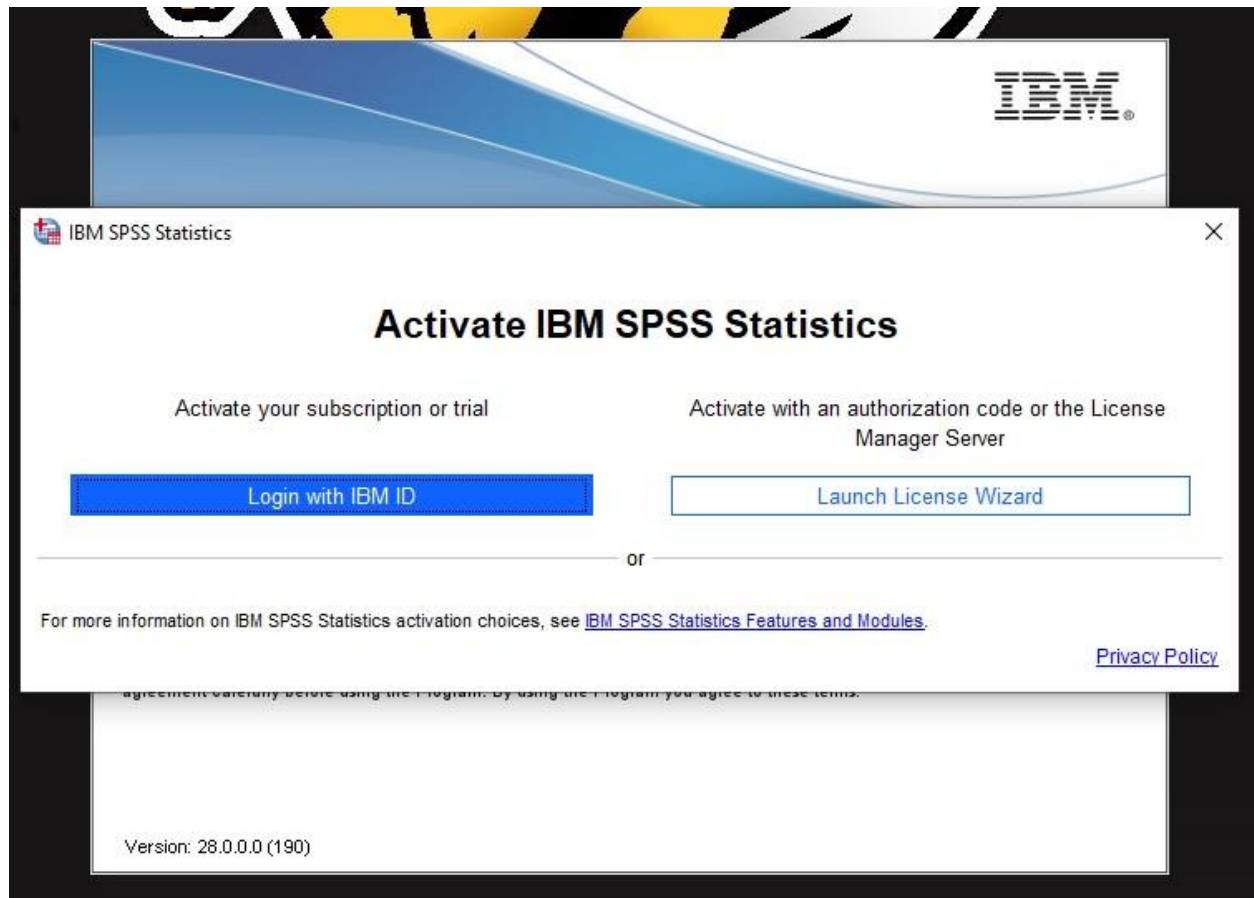
12. The program will now install. (This may take up to 10 minutes)



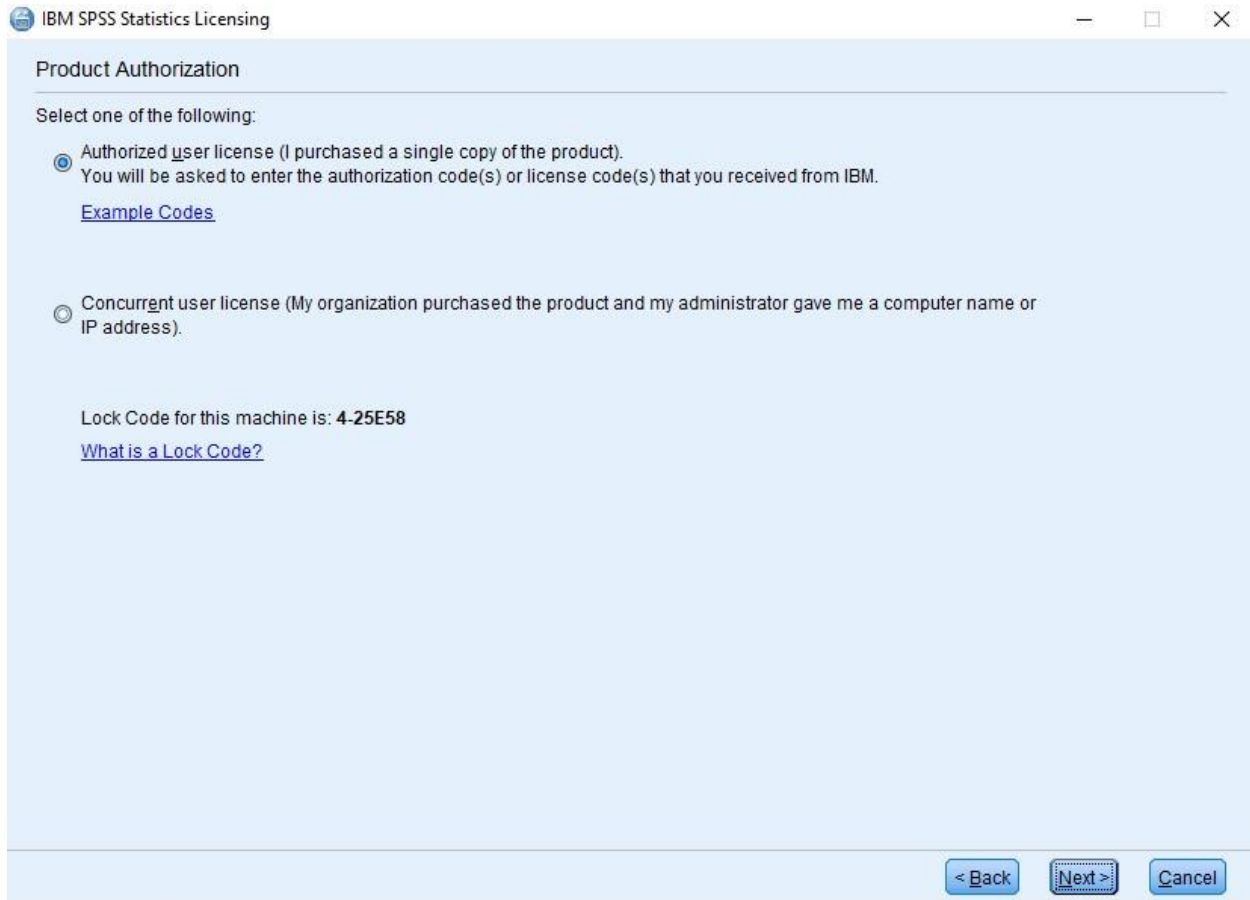
13. Make sure to check the “Start IBM SPSS Statistics now” and click “Finish”



14. Click on “Launch License Wizard.”

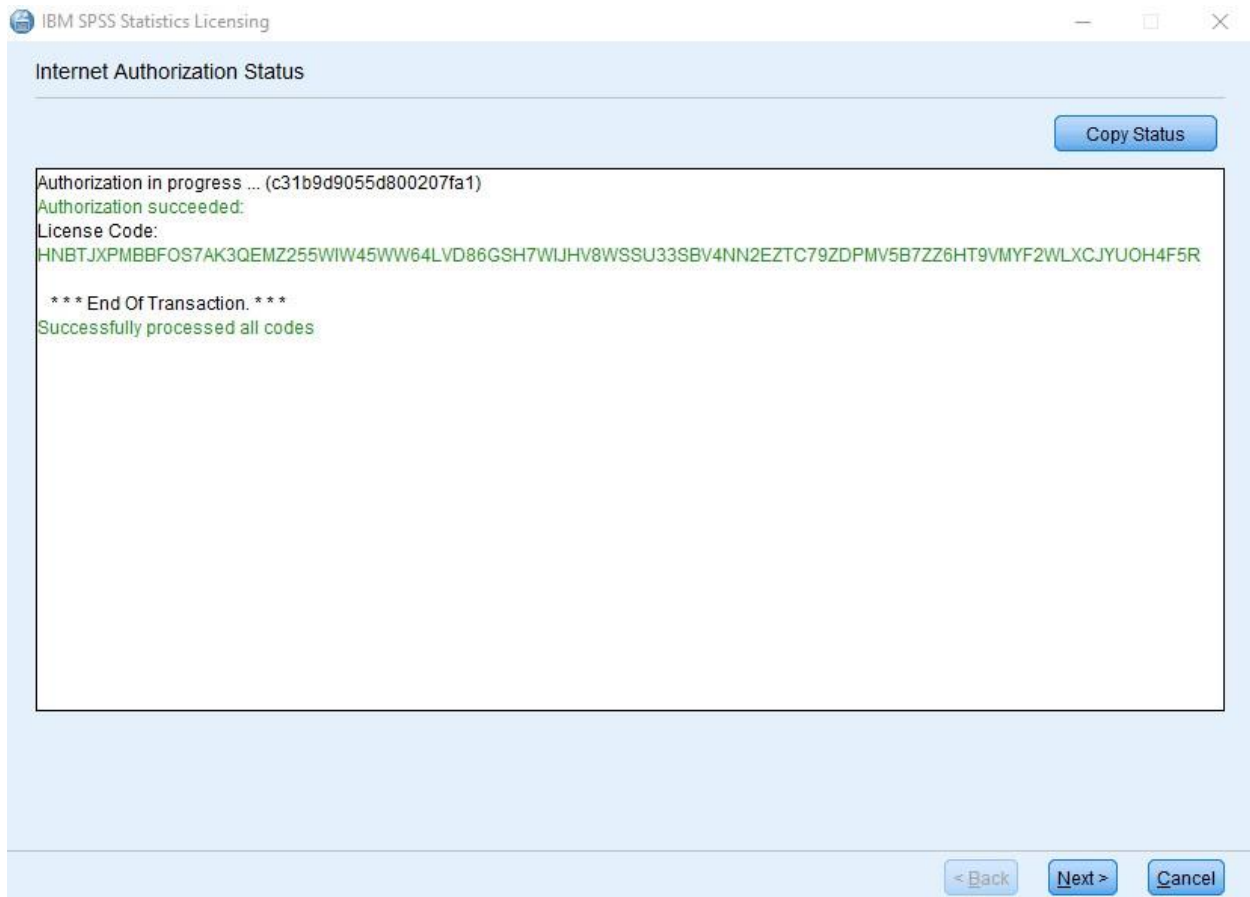


15. You should then be prompted with the product authorization page. Select the first option and click “Next.”



16. Enter the code c31b9d9055d800207fa1 into the box and click next, **this step will require internet connection.**

17.If the activation was successful, you should see the following screen, click “Next.” Then “Finish” on the final page.



18.Restart your PC now, once restarted Launch SPSS 28 and begin using it. SPSS 28 is now installed on your computer.